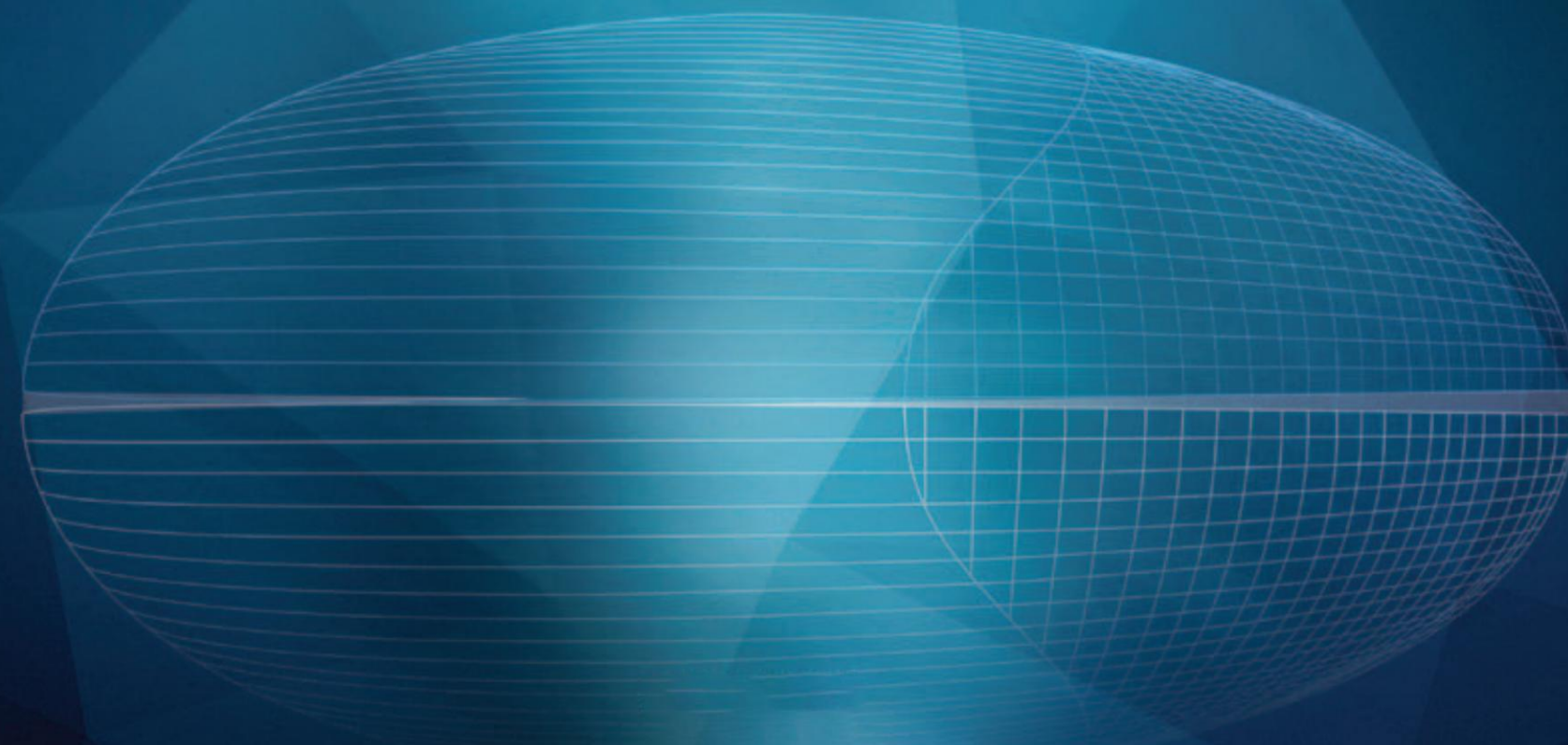


BUILD THE WORLD TOGETHER AND
CREATE BRILLIANT ALUMINUM
共筑世界·铝创辉煌

TDLB



广东宝松工业科技有限公司
BRILLIANCE GROUP CORPORATION LIMITED

☎ +86-757 8556 3891

✉ info@aagintr.com

🌐 www.hhalum.com www.aagaluminum.com

厚德 精诚

名家匠心，铝创辉煌
Masters ingenuity aluminum creates brilliance

承天地灵气，传文明精艺；

以德为本，聚中华之菁英；

融五洲智慧，结四海朋友；

To inherit the spirit of heaven and earth and to pass on the fine arts of civilization;
Take virtue as the foundation, gather the elite of China;
Integrate the wisdom of the five continents and make friends from all over the world.



INTERNATIONAL QUALITY

NATIONAL BRAND

民族品牌，国际品质

树百年民族品牌，开拓国际市场

以民族社会责任为根本理念

诚信、务实、开拓、创新的企业精神，

以优质的产品为核心，

从工程设计、产品生产、品质检验、施工安装等各个环节，

都全面贯彻执行以产品质量为重心

实行严格控制管理

Taking National Social Responsibility as the Fundamental Idea

Integrity, pragmatism, pioneering and innovative enterprise spirit,

With high quality products as the core,

From the aspects of Engineering design, product production, quality inspection, construction and installation, etc.

Full and thorough implementation with product quality as the focus

Implementing strict control and management



解读·我们 | 中国制造·世界品质

Interpretation -US Made in China and World Quality

广东宝松工业科技有限公司，是一家致力实现客户价值最大化的铝单板建材建筑装饰企业，秉持“用心创造建筑之美”的思想，专注为高端企业及高端价值追求的室内外装饰客户提供个性化、一体化的高品质建筑装饰服务。

自成立至今，业务已涵盖商业写字楼、会展中心、酒店、机场、地铁站、高铁站、购物中心、体育馆等不同风格建筑领域，业务范围涉及加拿大、英国、美国、意大利以及东南亚国家，遍布中国、远及海外几十个城市，深受国内与海外广大客户的欢迎和喜爱。

依托公司雄厚的技术力量和强大的产品研发能力，以及先进的生产、检测设备、严格管理、技术专利研发、国际设计，铝佰的每一个出厂产品、每一项工程均以安全环保的高品质呈现，持续不断地为客户提供科技、艺术与人文完美结合的科学解决方案。

Guangdong Baosong Industrial Technology Co., Ltd. is an aluminum veneer building materials building art decoration enterprise committed to maximizing customer value.Uphold the idea of "creating the beauty of architecture" and focus on High-end enterprises and high-end value pursuit of indoor and outdoor decoration customers to provide personalized,Integrated high-quality architectural decoration services.

Since its establishment, the business has covered commercial office buildings, convention and exhibition centers, hotels, airports, subway stations, high-speed rail stations, shopping centers, gymnasiums and other architectural fields of different styles, and the business scope covers Canada, Britain, the United States, Italy and Southeast Asian countries, all over China, far and overseas dozens of cities, by the domestic and overseas customers welcome and love.

Relying on the company's strong technical force and strong product research and development capabilities, as well as advanced production and testing equipment, strict management, technology patent research and development, international design, every factory product of Aluminum Bai.Each project is presented with high quality of safety and environmental protection, and continues to provide customers with scientific solutions that perfectly combine science and technology, art and humanity.



Dedication to the country and pursuit of excellence

敬业报国，追求卓越

—— 企业使命



Unity and Cohesion, Elite Seminar 团结凝聚力量，精英研讨会

同一个目标，同一个梦想，为打造最好铝单板而奋斗。
The same goal, the same dream, to create the best aluminum veneer and struggle.



企业宗旨

我们始终坚持“诚信经营、精益求精”用心做好每一块铝单板。

Enterprise purpose

We always adhere to "honest management, excellence" to do a good job in every single piece of aluminum veneer.

科技领航

SCIENCE AND TECHNOLOGY PILOTAGE

保驾护航

高端进口设备，引领铝单板制造前沿

公司不断引进国外最先进生产设备与技术来提升产品质量，打造高端品质。拥有多台电脑数控剪板机、折弯机、雕刻机和引进日本AMADA电脑数控冲床，不断提高钣金的精确度与公差，达到游艇钣金水平。

High-end imported equipment, leading the forefront of aluminum veneer manufacturing

The company continuously introduces the most advanced foreign production equipment and technology to upgrade Product quality, create high-end quality.
Has many computer numerical control shears, benders, Engraving machine and imported AMADA computer numerical control punch machine from Japan.
Continuously improve the accuracy and work error of sheet metal.
Reaching the level of yacht sheet metal.

数码剪床机 Digital cutting machine

利用剪床机剪出展开图的外形长宽尺寸。若有冲孔、切角的，再转冲结合模具冲孔、切角成型。我公司剪床可加工的铝单板厚度为0.5—6mm，钢板0.5—3mm，长度6米以内。

The shape length and width of the expansion drawing are cut out by the shearing machine. If there is punching and cutting angle, then turn punching combined with die punching and cutting angle forming.

数控冲床 CNC punch press

利用冲床分一步或多步在板材上将零件展开后的平板结构冲制成型。一次性装载64个工位模具，其优点是耗费工时短，效率高，可减少加工成本，在批量生产时经常用到。数控冲床在模具的配合下可以冲出具有特殊的镂空效果。

The sheet structure of the parts unfolded is punched into shape by a punch press in one or more steps. The NC punch can punch out with special hollowing effect with the help of the die.

数码雕刻机 Digital engraving machine

数码雕刻机下料是首先要编写数控加工程序。利用编程软件，将绘制的展开图编写成数控加工机床可识别的程序。让其根据程序一步一步的在平板件上的结构形状切割出来，加工时注意排版合理省料。我公司的数控雕刻机可加工范围为2mx6m的铝板。

Using programming software, the drawing of the expansion diagram is programmed into a recognizable program for NC machine tools. Let it be cut out step by step according to the program on the structural shape of the plate.

数控冲孔机 CNC punching machine

冲孔就是用冲床按图纸在铝板上冲出相应的孔位，以便组装时安装角码。加工时要注意孔位间距及孔位边距是否正确。

Punching is to use a punch press to punch out the corresponding hole position on the aluminium board according to the drawings, so as to install corner codes when assembling.

数控折弯机 CNC bending machine

折弯就是根据图纸将2D的平板件，折成3D的零件，其加工需要用折弯机来完成操作。它也有一定的折弯顺序，其原则是对下一刀不产生干涉的先折，会产生干涉的后折，对折弯比较复杂或者几个折弯太过靠边的情况，可以用数控开槽机对某些折弯处进行开槽处理，然后折成需要的角度。

我公司数控折弯机可加工的铝单板厚度为0.5—6mm，钢板0.5—3mm，折弯机可以折出45及45度以上的任意角度。

Bending is to fold a 2D flat piece into a 3D part according to the drawings. Its processing needs a bending machine to complete the operation. CNC slotting machine can be used to slot certain bending points, and then fold into the desired angle.



喷涂设备 Spraying equipment



数控冲床机 CNC punch press



Digital engraving machine
全电伺服数控转塔冲床



Digital cutting machine
电脑数控雕刻机



大容量仓库 Spraying equipment



Digital cutting machine
全数控折弯机



广泛适用于飞机场、火车站、地铁站、候车大厅、运动场馆、办公室、写字楼、餐厅、酒吧、超市、商场、饭店、酒店大厅等场所内外墙。

Widely used in airports, railway stations, subway stations, waiting halls, sports venues, offices, restaurants, bars, supermarkets, shopping malls, restaurants, hotel lobbies and other places inside and outside walls.

Achieving the Most Beautiful Aluminum Veneer of the Nation Towards Internationalized Modern Enterprises 向国际化现代企业迈进，实现民族最美铝单板！

携手前行，共创佳绩 Work hand in hand to achieve good results

携手梦想，列阵扬帆，团结一致，开拓创新，打造中国铝单板行业质量领先产品。
Hand in hand, set sail, unite, pioneer and innovate, and build the leading quality products in China's aluminum veneer industry.

C O N T E N T S 产 品 目 录

室外篇 Outdoor chapter

第一章：铝单板 Aluminum veneer

- 幕墙铝单板系列
- 双曲铝单板系列
- 造型铝单板系列
- 氟碳铝单板系列
- 真石漆仿石纹铝单板系列
- 仿木纹铝单板系列
- 搪瓷铝单板系列
- Curtain Wall Aluminum Veneer Series
- Hyperbolic Aluminum Veneer Series
- Molding Aluminum Veneer Series
- Aluminum fluorocarbon veneer series
- Real stone lacquer stone-like aluminum veneer series
- Wood-like Aluminum Veneer Series
- Enamel Aluminum Veneer Series

P013-P048

第二章：百叶遮阳板及空调罩系列

Shutter and Air Conditioning Cover Series
P049-P050

第三章：冲孔镂空雕花铝单板系列

Punch hollow carved aluminium veneer series
P051-P062

室内篇 Indoor chapter

第四章：屏风窗花系列

Screen Window Flower Series
P063-P066

第五章：勾搭吊顶系列

Hanging ceiling series
P067-P068

第六章：蜂窝板系列

Honeycomb panel series
P069-P070

第七章：瓦楞板系列

Corrugated board series
P071-P072

第八章：弧形方通系列

Arc-shaped Fangtong Series
P073-P076

第九章：工程展示

Engineering Exhibition
P077-P094



产品篇 PRODUCT

MAKE ORDINARY MORE EXCELLENT

有更好的点缀，让平凡变得更卓越！

一片铝单板，可以烘托一种现代的气息！

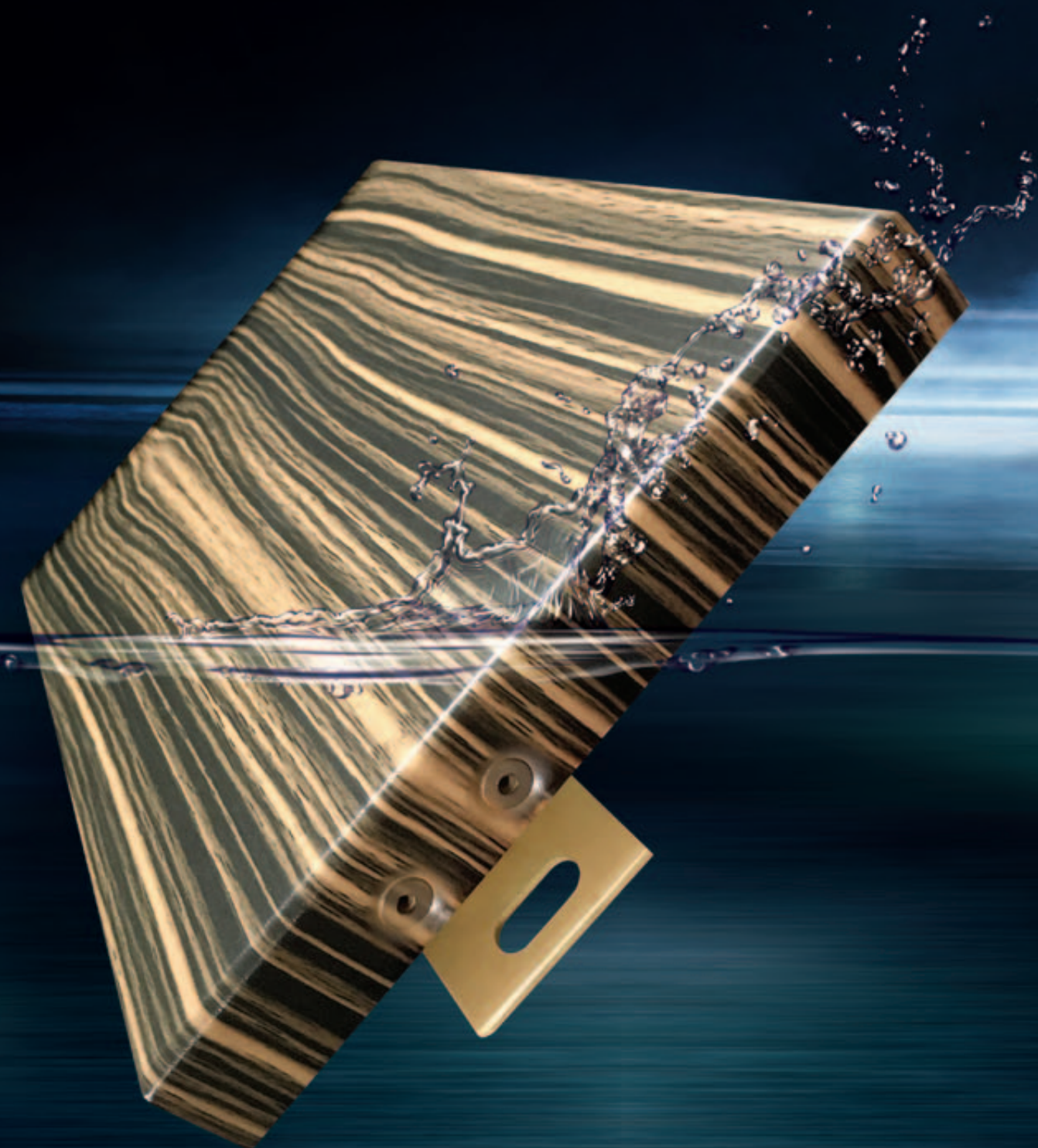
Indoor piece of aluminum veneer, can foil a modern atmosphere!

DELICATE TEXTURE 细腻的质感，给您我一个感动的理由！

每个感动都来自细节，一片铝单板点缀一个格调。

一个格调缔造无数的感动！

Every move comes from details, a piece of aluminum veneer embellished with
a style. A style creates countless touches!





●异型户外幕墙铝单板效果

幕墙铝单板采用优质铝板加工而成，表层采用氟碳喷涂，不受紫外线、温度、气温和大气侵蚀，更具有良好的抗弯曲度及优良的抗风压性能，并且能够发挥其特点，二次开发使用。幕墙铝单板重量轻、高度强、防水、防火、防蚀、加工性能好、维护费用低、使用寿命长。

铝单板可加工成各种弧形及异形，表面可喷涂成多种颜色，在墙面形成各种美丽的图案，并且可以和玻璃幕墙等组合成不同的外观形体，使建筑物更具高贵典雅的风格。

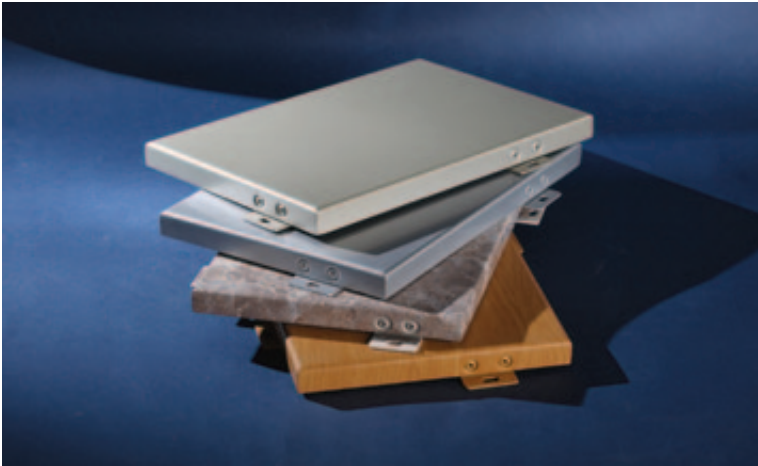
Curtain wall aluminium veneer is made of high quality aluminium plate. Aluminum veneer can be processed into various shapes and colors, making the building more noble and elegant style.

CURTAIN WALL ALUMINIUM VENEER SERIES

幕墙铝单板系列

作为一种外墙建筑装饰行业中常用装饰材料，铝单板逐步成为一名强势成员，在室内外墙领域中应用尤为广泛。铝单板正以其突出的优点,越来越受到市场的青睐。重量轻、刚性强度高、耐候性和耐腐蚀性；可加工成平面、弧形面和球面等各种复杂形状，表面处理色彩丰富，安装施工简易，清洁保养方便；稳定的产品物理性，有优异的环保及防火功能；并具有良好的抗震性与防风能力。

Aluminum veneer has gradually become a strong member of the assembly material. Aluminum veneer is becoming more and more popular in the market because of its outstanding advantages. Light weight, high strength, weatherproof, rich, easy to install, wind resistance, fire protection.





According to different curvatures and plates, appropriate process is adopted. Firstly, a suitable template is made. First, a four-roll circular rolling machine is used in the X direction to make a circular rolling according to the single curve process. Then, in the Y direction, a local ignition welding can be used to bend the plate surface to the required radian. After processing, the preliminary formed parts are inspected according to the template, and the local parts are subjected to secondary correction. Around the installation edge for welding. After forming, all kinds of aluminum veneers are made by welding, polishing, cleaning, spraying and painting.

CURTAIN WALL ALUMINIUM VENEER SERIES 幕墙铝单板系列

PRECISION DIVERSIFICATION ●精密的制作满足多样化要求

根据不同的曲率铝板采用合适的工艺。先制作合适的模版，在 X 方向用四辊卷圆机按单曲工艺先作滚圆，然后在 Y 方向可采用局部点燃焊使板面弯曲至所需弧度。加工后根据模版对初步成形的工件进行检验，局部地方在进行二次校正。四周安装边进行烧焊。成型后经过焊接、打磨、抛光、清洗、喷漆、制成各种各种样式的铝单板。

CURTAIN WALL ALUMINIUM VENEER
SERIES
幕墙铝单板系列

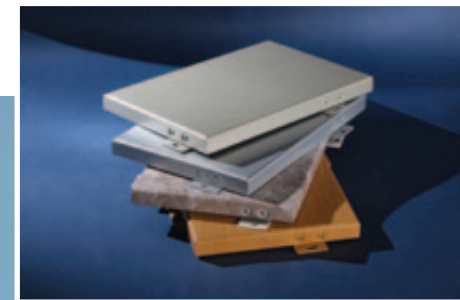
BEAUTIFUL, LIGHT AND DURABLE
● 美观轻巧耐用





SUPERIOR FEATURES ARE PREFERRED FOR DECORATION

1. Compared with ceramic and glass materials, aluminum veneer has the characteristics of light weight, high strength, good rigidity and easy processing.
2. Aluminum veneer surface coating is durable due to the choice of fluorocarbon coating.
3. Aluminum veneer has good acid and alkali resistance. At present, fluorocarbon coatings are the best coatings for outdoor use.
4. It has strong machinability and convenient installation.
5. Sound insulation, shock absorption performance is good, thermal insulation materials, good flame retardant.
6. Aluminum veneer has wide choice of color and beautiful color.
7. Aluminum veneers can be made into almost any shape.



CURTAIN WALL ALUMINIUM VENEER SERIES 幕墙铝单板系列

优越的特性建筑装饰首选

- 1、铝单板与瓷片、玻璃等材料相比，铝单板具有重量轻、强度高、刚性好、易加工等特点。
- 2、铝单板表面涂层由于选择了氟碳涂料，故具有chao强耐候性和耐紫外线性能，色彩和光泽保持长久，耐腐蚀性好，可在-50℃-80℃的恶劣条件下使用。
- 3、铝单板耐酸碱性能良好。目前氟碳涂料是户外使用性能最优异的涂料。
- 4、加工性能优良，易切割、焊接、弯曲，可制作造型和便于工地安装，这一点是其它装饰材料无法比拟的。
- 5、隔音、减震性能良好，并可在铝单板上任意冲孔，也可在背后加吸音棉、岩棉等吸音隔热材料，阻燃性好，发生火灾时无毒烟产生。
- 6、铝单板颜色可选择性广、色泽漂亮，可任意选择。
- 7、由于加工性能优良，铝单板几乎可以做任何形状。这样使得设计师的设计方案不受限制的发挥从而达到完美的装饰效果。

CURTAIN WALL ALUMINIUM VENEER
SERIES
幕墙铝单板系列

●先进的表面处理技术

铝单板是由经过表面处理并用涂层烤漆的铝板作为表面，聚乙烯，聚丙烯塑料混合作为芯层，经过一系列工艺加工复合而成的新型材料。由于铝单板是由性质截然不同的两种材料（金属和非金属）组成，它既保留了原组成材料（金属铝、非金属聚乙烯塑料）的主要特性，又克服了原组成材料的不足，进而获得了众多优异的材料性质，如豪华性、艳丽多彩的装饰性、耐候、耐蚀、耐冲击、防火、防潮、隔音、隔热、抗震性；质轻、易加工成型、易搬运安装等特性，这些特点为铝塑板开阔了广阔的运用前景。



ADVANCED SURFACE TREATMENT TECHNOLOGY

Aluminum veneer is made of aluminium sheet which has been surface treated and coated with paint, polyethylene and polypropylene plastics as core layer, through a series of processing and compounding, it becomes colorful, weather-resistant, corrosion-resistant, impact-resistant, fire-proof, moisture-proof, sound-proof, heat-proof and shock-resistant; light weight, these characteristics open up broad application prospects for aluminium-plastic sheet.



CURTAIN WALL ALUMINIUM VENEER
SERIES
幕墙铝单板系列

GOOD CORROSION RESISTANCE
● 铝单板耐腐蚀性能好



CURTAIN WALL ALUMINIUM VENEER
SERIES

幕墙铝单板系列

EASY CUSTOMIZATION

● 铝单板具有极大的定制性能

铝单板幕墙吊顶非标板设计风独特、结构随意、造型各异的建筑吊顶，融合了现代装饰的使用功能和极具时代感的设计效果，使材料的本质得到充分的体现，从而使空间延伸在此得到充分释放。铝单板幕墙吊顶非标板的规格，造型，颜色均可随建筑师中的任意设计而生加工；以专用铝质平板作为主材，按设计图纸通过钣金加工生线成型，配以专用结构配件，再进行的碳油漆表面喷涂处理，成为优质的品；由于其在装饰性，耐候性和性等方面显示的优势而风靡全球，成为公认的楼宇吊顶和外墙材料。

Aluminum veneer curtain wall ceiling is a kind of building ceiling with unique design wind, random structure and different shapes. It combines the use function of modern decoration and the design effect with a great sense of the times, so that the essence of materials can be fully embodied and the extension of space can be fully released here. Aluminum veneer curtain wall ceiling non-standard plate specifications, shape, color can be processed with the arbitrary design of the architect; special aluminum plate as the main material, according to the design drawings through sheet metal processing raw wire forming, with special structural accessories, and then carbon paint surface spraying treatment, become high-quality products; because of its advantages in decoration, weatherability and other aspects of display. It is popular all over the world and has become a recognized building ceiling and exterior wall material.



CURTAIN WALL ALUMINIUM VENEER
SERIES
幕墙铝单板系列

DECORATION ESSENTIAL
●元素的采纳，外墙装饰必备

户外铝单板系列 氟碳铝单板凭借其优越的耐候性，耐腐蚀性，质轻美观特点，在较短的时间内风靡全球，现已成为室内外大型建筑装饰的新型环保装饰材料。氟碳铝单板优越的环保性能及可造性是其他建筑材料不可代替的，因此深受建筑设计师的追捧。

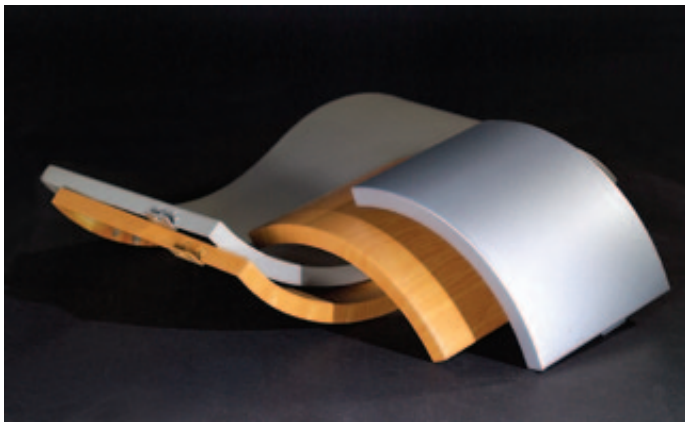
Outdoor aluminium fluorocarbon veneer series has become a new environmental protection decoration material for large-scale indoor and outdoor buildings because of its excellent weather resistance, corrosion resistance, light weight and beautiful features. Fluorocarbon-aluminium veneer has excellent environmental performance and manufacturability, which can not be replaced by other building materials. Therefore, it is deeply pursued by architects.



- ◆ 质量轻，强度高，板面平整
 - ◆ 良好吸热、隔热、保温效果
 - ◆ 良好的吸音、隔音、消音效果
 - ◆ 防火、防震功能突出
 - ◆ 结构稳定，抗高压
 - ◆ 形状、大小、厚度均可定做，满足工程需求
 - ◆ 安装维护简便灵活，降低施工和维护成本
- 铝单板幕墙以其质轻、强度高、刚度大等诸多优点，已被广泛应用于高层建筑外墙装饰。

- ◆ Light weight, high strength, flat surface
- ◆ Good effect of heat absorption, insulation and insulation
- ◆ Good sound absorption, insulation and muffling effect
- ◆ Fire and earthquake prevention functions are outstanding
- ◆ Structural stability, high pressure resistance
- ◆ Shape, size and thickness can be customized to meet engineering requirements.
- ◆ Installation and maintenance is simple and flexible, and has been widely used in high-rise building exterior wall decoration for its light weight, high strength and high stiffness.





CHARACTERISTICS OF HYPERBOLIC ALUMINUM VENEER

- Hypoid plate is produced in a short time by German imported universal forming machine and CNC hyperboloid software.
- Double curved panels bring valuable ideas and visual feasts to designers.
- The effect of double bending panel is better than that of common hyperbolic flatness produced by splitting welding, and the installation effect is smoother than that of pseudo hyperbolic arcs such as "straight band curve", which fully demonstrates the unique charm of hyperbolic aluminum veneer irreplaceable on metal curtain wall.

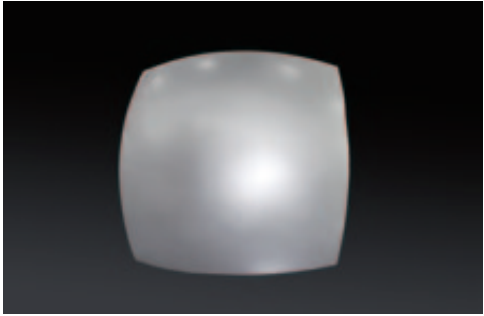


HYPERBOLIC ALUMINUM VENEER

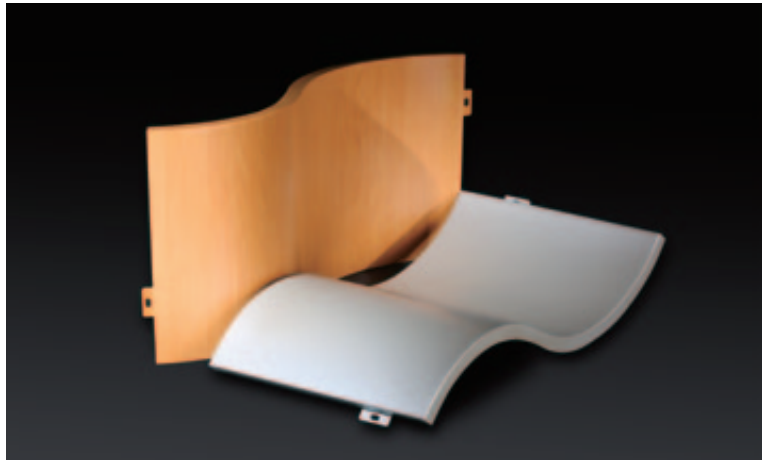
SERIES 双曲铝单板系列

CHARACTERISTIC

●双曲铝单板特点



- 双曲面板是采用德国进口万能成型机配合数控双曲面软件在短时间内生产出成品。
- 双弯曲面板给设计师带来宝贵的想法和视觉盛宴。
- 双弯曲面板效果比常见的通过分割焊接生产的双曲平整度好，安装效果比所谓的“以直带曲”等假双曲的弧线圆滑，充分展示了双曲面铝单板在金属幕墙上无可替代的独特魅力。



HYPERBOLIC ALUMINUM VENEER HAS ALWAYS BEEN POPULAR

● 双曲铝单板打造景观建筑一直倍受青睐

双曲铝单板以高等级铝合金为主要材料，根据图纸所设计的双曲，经过裁剪、折边、弯弧、焊接、加筋、打磨、喷涂等工序等多种加工工艺处理完成的金属幕墙产品。作为建筑幕墙装饰的一种主要选择对象，双曲铝单板系列产品多用于楼宇大堂、机场、车站、重要公共设施、体育场馆、民族特色建筑等高档建筑。

The hyperbolic aluminium veneer is mainly made of high-grade aluminium alloy. According to the hyperbolic design of drawings, the metal curtain wall products are processed by cutting, folding, arc bending, welding, reinforcing, grinding, spraying and other processes. As a main choice of curtain wall decoration, hyperbolic aluminum veneer series products are mostly used in high-grade buildings such as building lobbies, airports, stations, important public facilities, stadiums and buildings with national characteristics.



HYPERBOLIC ALUMINUM VENEER SERIES 双曲铝单板系列

STRICT PROCESSING OF HYPERBOLIC ALUMINUM VENEER WITH ADVANCED EQUIPMENT

● 双曲铝单板采用先进设备严格加工

双曲铝单板的设备先进，工艺精湛，品质优良。板面效果比常见的通过分割焊接生产的双曲板平整度好，安装效果比所谓的 " 以直带曲 " 等假双曲的弧线圆滑，充分展示了双曲面铝单板在幕墙上无可替代的独特魅力。

The equipment of hyperbolic aluminum veneer is advanced, the craft is exquisite and the quality is excellent. The surface effect is better than the common hyperbolic plate produced by splitting welding, and the installation effect is smoother than the pseudo-hyperbolic arcs such as "straight belt curve", which fully demonstrates the unique charm of the hyperbolic aluminum veneer irreplaceable on the curtain wall.

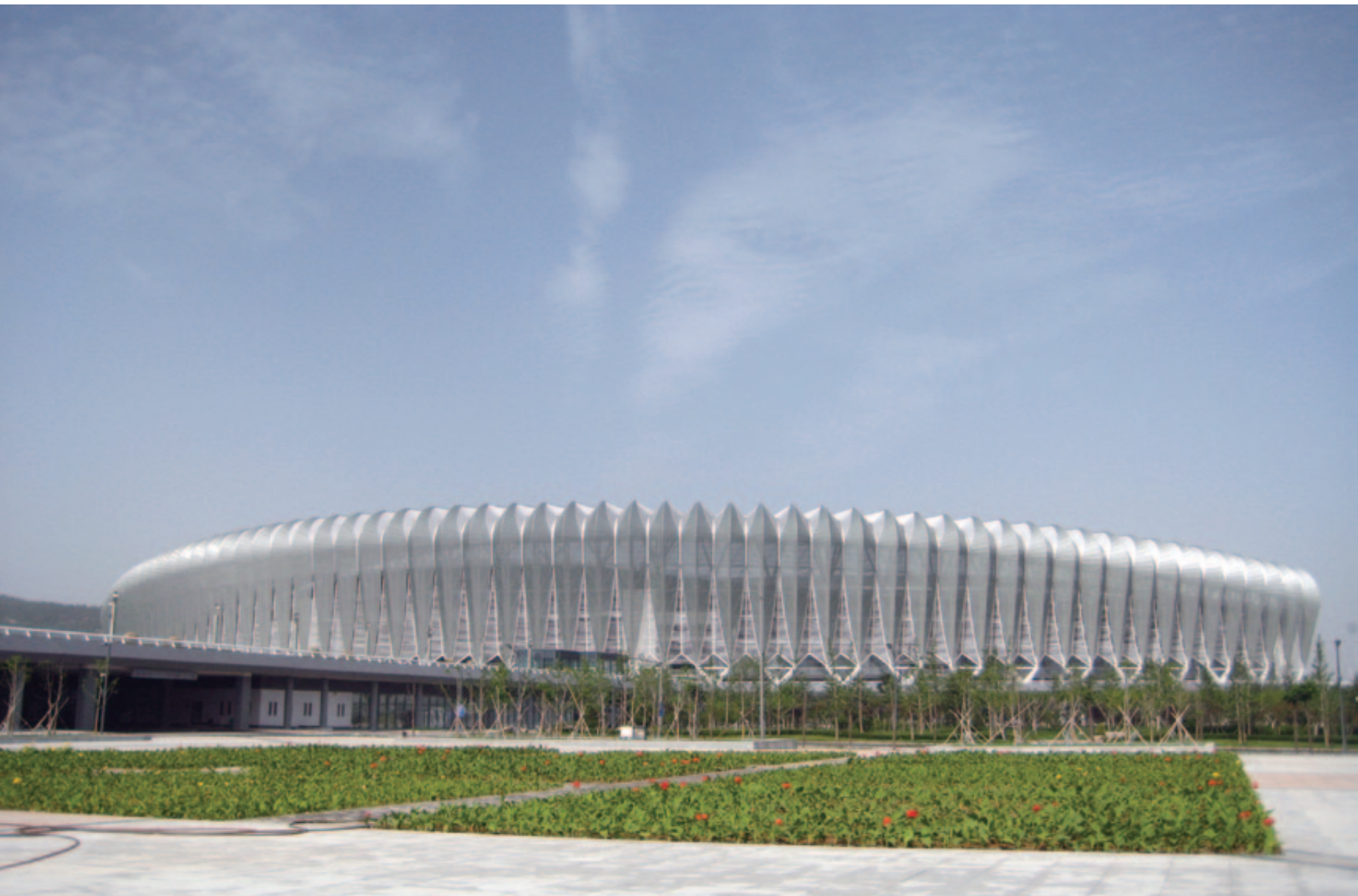
HYPERBOLIC ALUMINUM VENEER SERIES

SERIES
双曲铝单板系列

铝单板是建筑装饰设计的新宠，其美妙的弧线，完美的线条不仅易于周围的环境相互衬托、融为一体，而且体现出强烈的曲线感。特别是大型装饰工程和小型精装工程，它的应用越来越广泛。

Aluminum veneer is a new favorite in architectural decoration design, especially in large-scale decoration projects and small hardcover projects, its application is more and more extensive.





Molded Aluminum Veneer SERIES 造型铝单板系列

Seiko Manufacturing Various Shapes
●造型铝单板，精工制造各种异型

造型铝板以独特的造型给建筑带来耳目一新的视觉享受。从瓷砖、铝单板、造型铝板，一路的传承与演变无不体现了对产品的创新与追求。

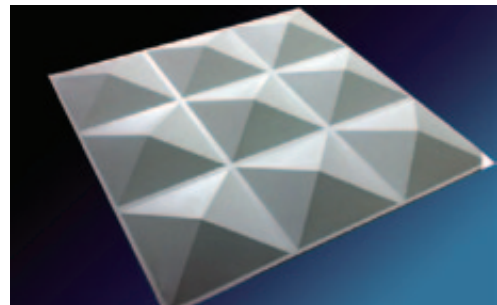
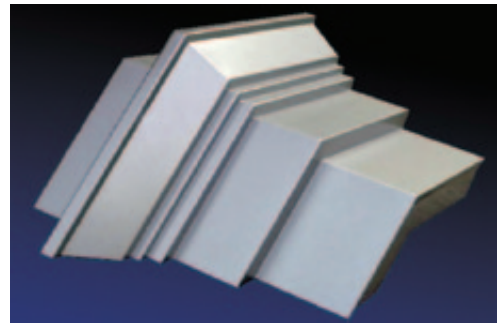
Modeling aluminum sheet brings new visual enjoyment to architecture with its unique shape. From ceramic tile, aluminium veneer, plastic aluminium plate, the inheritance and evolution of the whole way reflects the innovation and pursuit of products.





造型铝板结合了多种成型工艺，是铝单板中难度最大的一种异型板。我们制造的造型板精确度高，表面平滑，合缝精准而且可来图来样订制等特点。造型铝板以独特的造型给建筑带来耳目一新的视觉享受。从瓷砖、铝单板、造型铝板，一路的传承与演变无不体现了对产品的创新与追求；造型铝板的设计开发为建筑设计师提供了宝贵的设计创意和视觉盛宴，它的诞生将成为装饰材料中的宠儿，是对传统工艺的一种挑战与突破！它更是高档商住建筑常用的新型材料！

Molding aluminum sheet combines various forming processes, which is one of the most difficult profiled sheets in aluminum veneers. We have made high precision moulding board, from ceramic tile, aluminum veneer, moulding aluminum plate, is a kind of challenge and breakthrough to the traditional process! It is also a new material commonly used in high-end commercial and residential buildings!



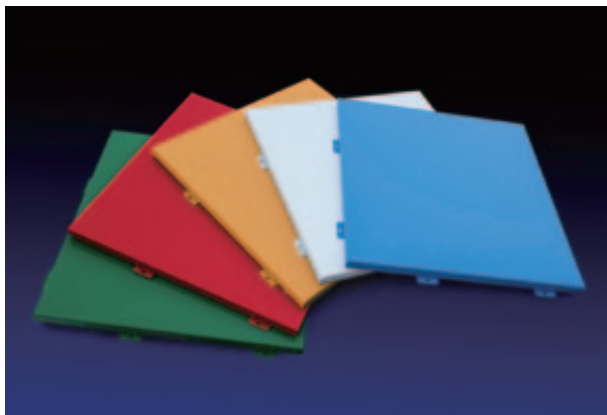
Molded Aluminum Veneer SERIES 造型铝单板系列

Seiko Manufacturing Various Shapes
●造型铝单板，精工制造各种异型

配备资深的技术团队，专业绘制各种异型方案。强大的生产技术满足您各种异型需求。

Equipped with senior technical team, specializing in drawing a variety of special-shaped programs. Powerful production technology to meet your various special needs.





PVDF Principle of Fluorocarbon Resin

● 氟碳树脂 PVDF 原理

铝单板表面喷涂采用的氟碳聚合物涂料，是一种应用于外墙金属涂料，其主要成分含有不少于 70%Kynar500 或 Hylar5000 的氟碳树脂，是一种分子结构最稳定及耐久性结合涂料，经过氟碳的产品能长期抵抗阳光中的紫色线照射，工业废气、酸雨及化学品的侵蚀，能长期保持颜色的稳定和光洁，涂层不剥落、不龟裂、不粉化等。产品达到美国 AAMA2605 质量标准。为使公司产品达到国际一流的水准，采用先进的进口喷涂设备，选用美国 PPG 公司生产的 Kynar-500PVDF 氟碳聚合物涂料喷涂。

Fluorocarbon polymer coatings used for spraying aluminium veneers are metal coatings for exterior walls. The main components of fluorocarbon coatings are not less than 70% Kynar 500 or Hylar 5000. They are the most stable and durable bonding coatings with molecular structure. The products meet the quality standard of AAMA2605 in the United States. Kynar-500PVDF fluorocarbon polymer coatings produced by PPG Company of the United States were sprayed with advanced imported spraying equipment.

Aluminum fluorocarbon veneer SERIES

氟碳铝单板系列

Characteristic

● 氟碳铝单板特点

耐腐蚀性优异：外墙氟碳铝单板在进行油漆喷涂之前，会经过一个抗氧化处理及铬化处理，这既清除掉了铝板表面的杂物，又在铝板表面形成了一层氧化膜，防止铝和空气中各种腐蚀性成分的接触。而且，在表面上喷涂上了性能稳定的氟碳油漆，这就大大的提升铝外墙氟碳铝单板的耐腐蚀性，表面更加耐腐蚀。日久持新。

Excellent corrosion resistance: Aluminum fluorocarbon veneers on exterior walls will undergo an anti-oxidation treatment and chromization treatment before painting. This not only removes the impurities on the surface of the aluminium plate, but also forms an oxide film on the surface of the aluminium plate to prevent the contact of various corrosive components in the air and aluminium. Moreover, a stable fluorocarbon paint is sprayed on the surface, which greatly improves the corrosion resistance of aluminium exterior wall fluorocarbon-aluminium veneers and makes the surface more corrosion-resistant. Keep new for a long time.

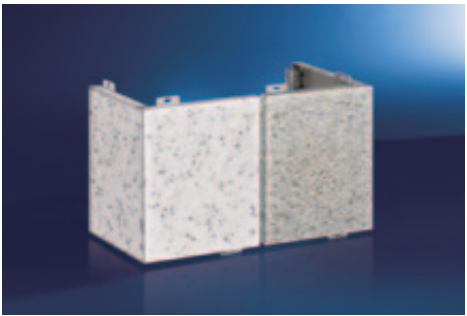
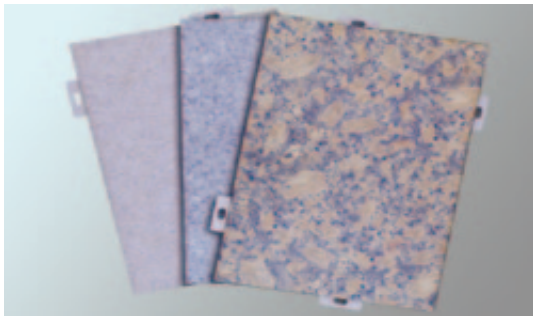


Real Stone Paint Aluminum Veneer
with Stone-like Grains

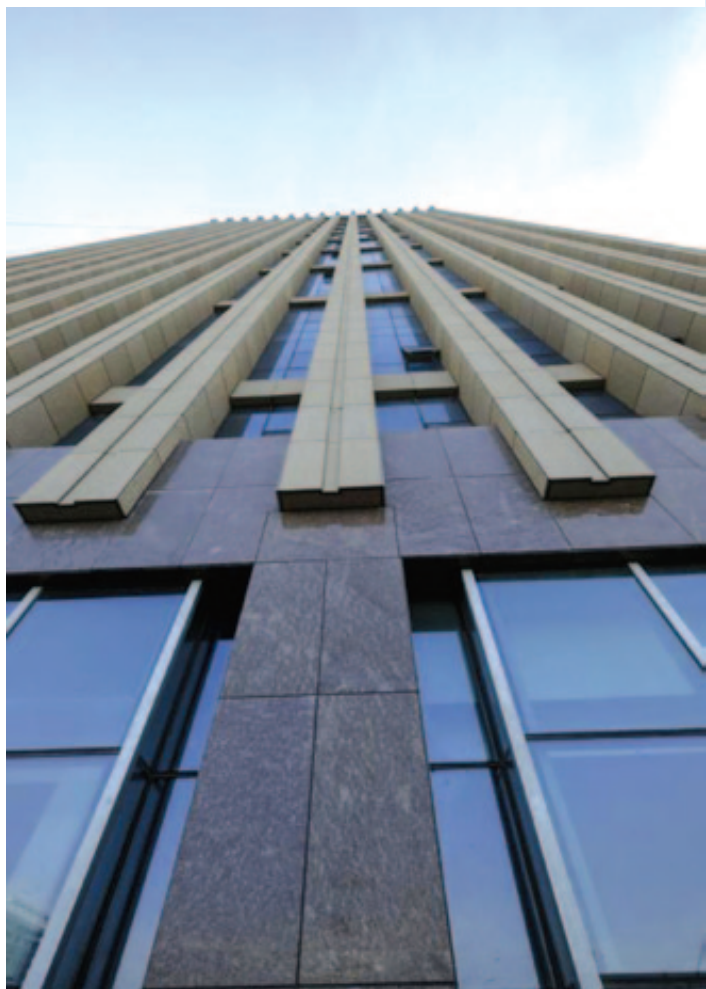
SERIES
真石漆仿石纹铝单板系列

Strong corrosion resistance

- 拥有大理石材料所具有的拒水性和对各种化学溶剂的耐腐蚀性



真石漆铝单板，装饰性强具有仿天然石材、大理石、花岗岩的厚浆型涂料。自然色泽，具有天然石材的质感，各种线格设计，能提供各种立体形状的花纹结构，能从视觉上彰显整个建筑的高雅与庄重之美，是外墙干挂石材最佳替代品。



Wood-like aluminium veneer
SERIES
仿木纹铝单板系列

Achieving Better Decoration

● 木纹铝单板实现更好的装饰

木纹铝单板表面涂层由于选择了氟碳涂料，具有超强的耐候性和耐紫外线性能，色彩和光泽保持长久，耐腐蚀性好，可在极度寒冷的恶劣条件下使用。耐酸碱性能好，目前氟碳涂料是户外使用性能最优异的涂料。

The surface coating of wood-grain aluminium veneer can be used in extreme cold and harsh conditions due to the selection of fluorocarbon coating, which has good corrosion resistance. Fluorocarbon coatings have good acid and alkali resistance. At present, fluorocarbon coatings have the best outdoor performance.



Enameled aluminium veneer
SERIES
搪瓷铝单板系列

The main component resin sprayed on the surface of enameled aluminium veneer has good weather resistance.

● 搪瓷铝单板表面喷涂主要成分树脂耐候性好

搪瓷的特殊结构使陶瓷器具有历经数千年不变的耐久力！利用陶瓷的这种优秀特性做成高纯度涂料，并将涂料涂装于铝板，就是生产的建筑外装用板材。

The special structure of enamel makes the ceramics have the same durability after thousands of years! Making use of this excellent characteristic of ceramics to make high-purity coatings, and coating coatings on aluminium sheets, is the production of building exterior panel.



Sunshade Blinds
SERIES
遮阳百叶系列

Shading, Safety, Ventilation and Beauty

● 遮阳、安全、通风、美观

- 透过金属叶片不同密度及形状的微孔，可以达到你所要求的遮阳效果，同时还可以看到室外的景色不失为一种较为经济的遮阳方式。
- 百叶遮阳板铝合金叶片高强度性能，多种颜色可供选择，完全关闭时兼具部分防盗功能，保证百叶窗的防风、防雨性能。
- 主要应用于大型商场、展览馆、车站、地铁站等场所的立面和顶面遮阳。

● Through the micro-holes of different densities and shapes of metal blades, you can achieve the desired shading effect. At the same time, you can also see that the outdoor scenery is a relatively economical shading method.

● Aluminum alloy louver blades have high strength performance and can be selected in many colors. When completely closed, it has part of anti-theft function to ensure the wind and rain performance of louvers.

● Mainly used in large shopping malls, exhibition halls, stations, subway stations and other places of the facade and roof shading.





Punch hollow carving board SERIES 冲孔镂空雕花板系列



Be able to customize according to people's different needs

●冲孔镂空铝单板能够根据人们的不同需求，利用大型激光雕刻机将铝单板加工成各式各样的花纹图案

镂空铝单板安装效果可体现出，产品的整体高贵典雅的造型，轻柔美妙的触感，让一切变得舒适，自然，昨日的无限荣耀，明日的再次辉煌，在你的优雅中演绎出今日的经典时尚。可以提供完美设计，能让产品安装出各种不同气度非凡的造型、青春亮丽的色彩、超一流的制作工艺、完全是舒适的最佳演绎。新材料的运用与全新的设计理念。

The installation effect of hollow aluminium veneer can be reflected. The overall noble and elegant shape of the product, soft and beautiful touch, can enable the product to install a variety of extraordinary shapes with different temperaments, bright colors, super-first-class production technology, is the best interpretation of complete comfort. The application of new materials and new design concepts.



Exquisite sculpture is widely used ●精雕应用广泛

艺术镂空板，是以高等级铝合金为主要材料，按照工程现场设计的尺寸、形状和构造形式，经过数控折弯行等技术成型，确保板材在加工后能平整不变形，并在其表面喷涂的基础上，制作间距比例大小一致的风格的一种高档金属装饰材料。艺术镂空板更能满足客户对美的追求，可根据个性风格定做。

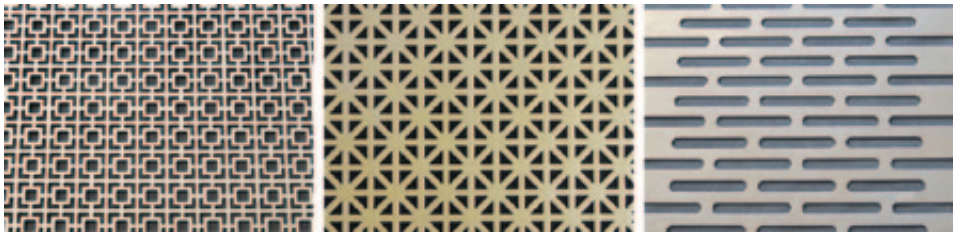
广泛适用于飞机场、火车站、地铁站、候车大厅、运动场馆、办公室、写字楼、餐厅、酒吧、超市、商场、饭店、酒店大厅等场所内外墙。

Widely used in airports, railway stations, subway stations, waiting halls, sports venues, offices, restaurants, bars, supermarkets, shopping malls, restaurants, hotel lobbies and other places inside and outside walls.



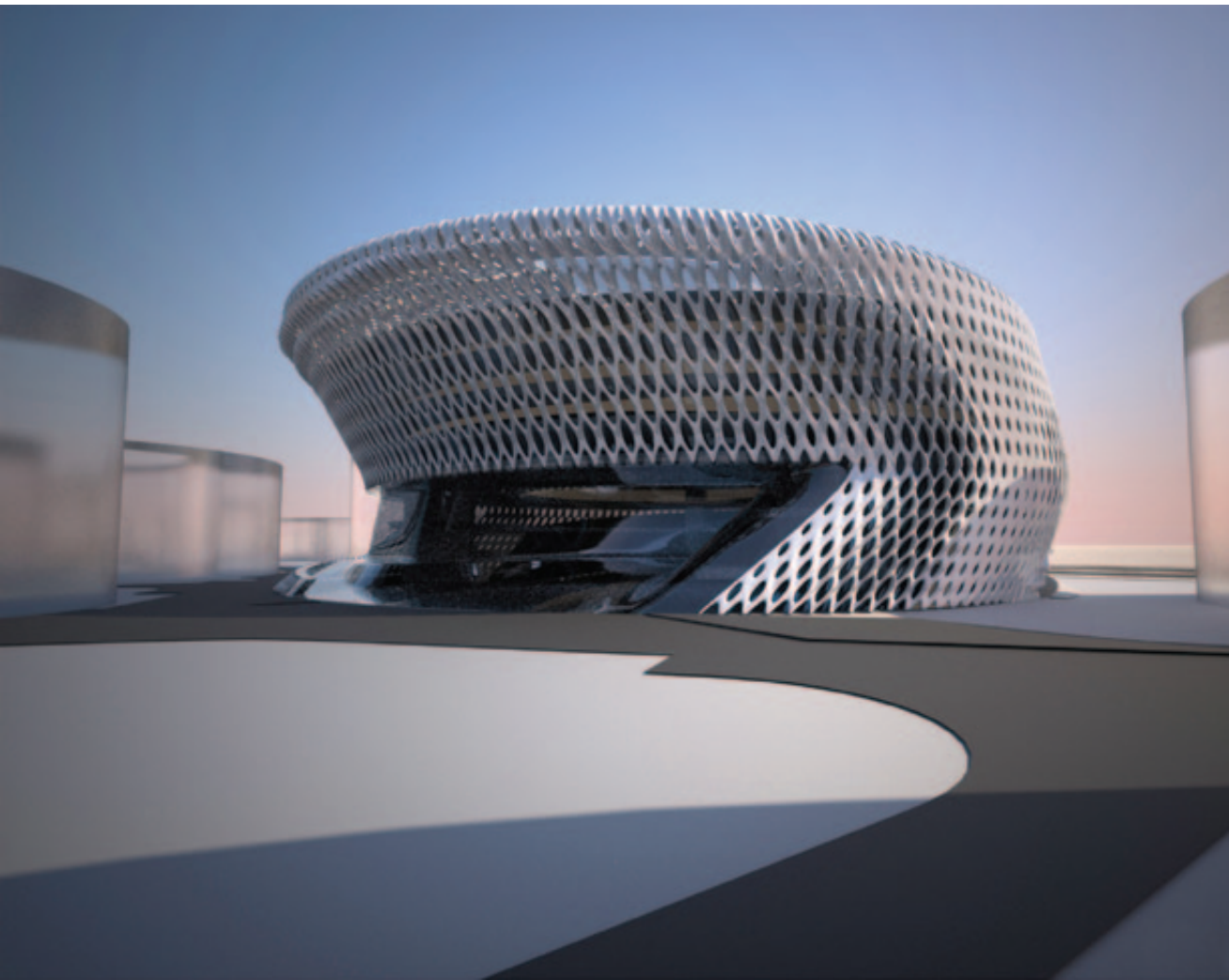
Punch hollow carving board SERIES 冲孔镂空雕花系列

Exact hollowing out, no time for art
●精确镂空，无暇艺术



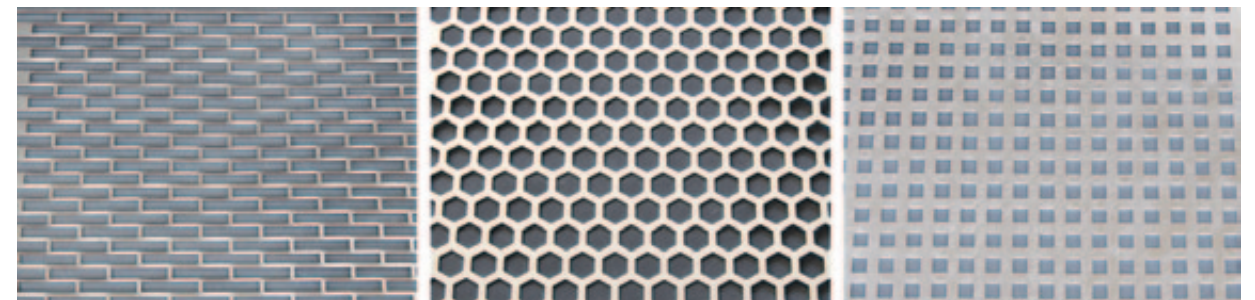
镂空铝单板多用于建筑内外墙装饰，可起到遮阳、通风，美化建筑外观，增添了不少生活艺术气息。除此之外，镂空铝单板可 100% 回收再利用，绿色环保健康。

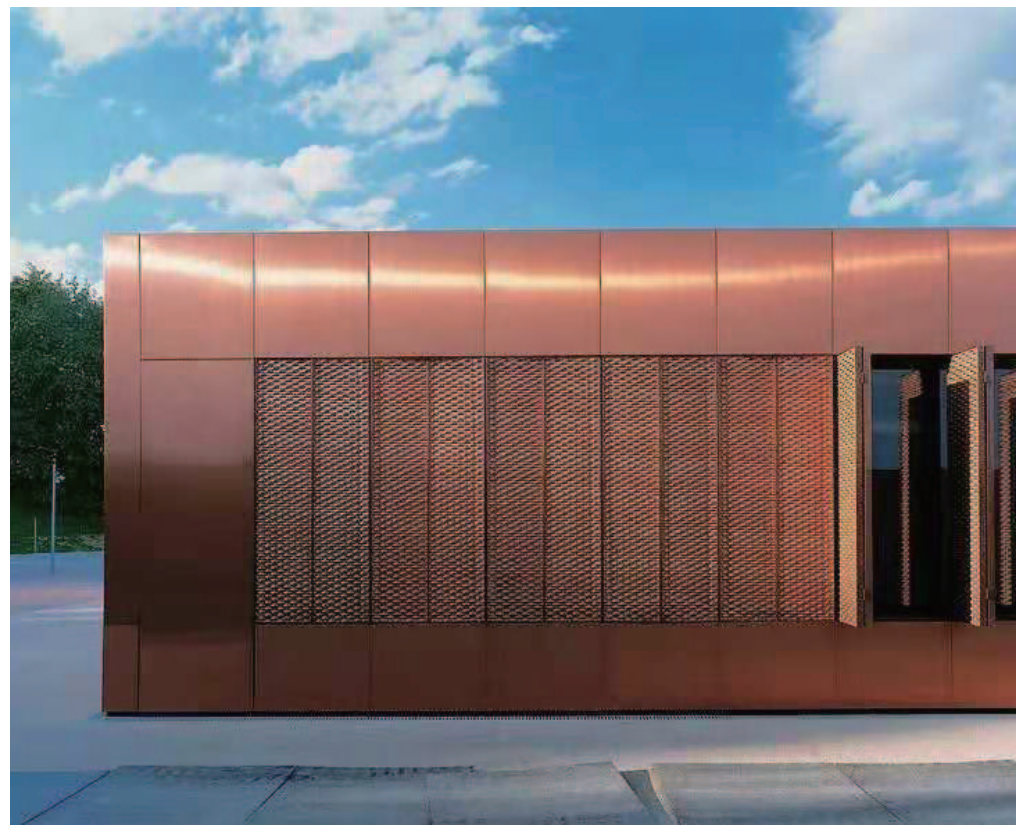
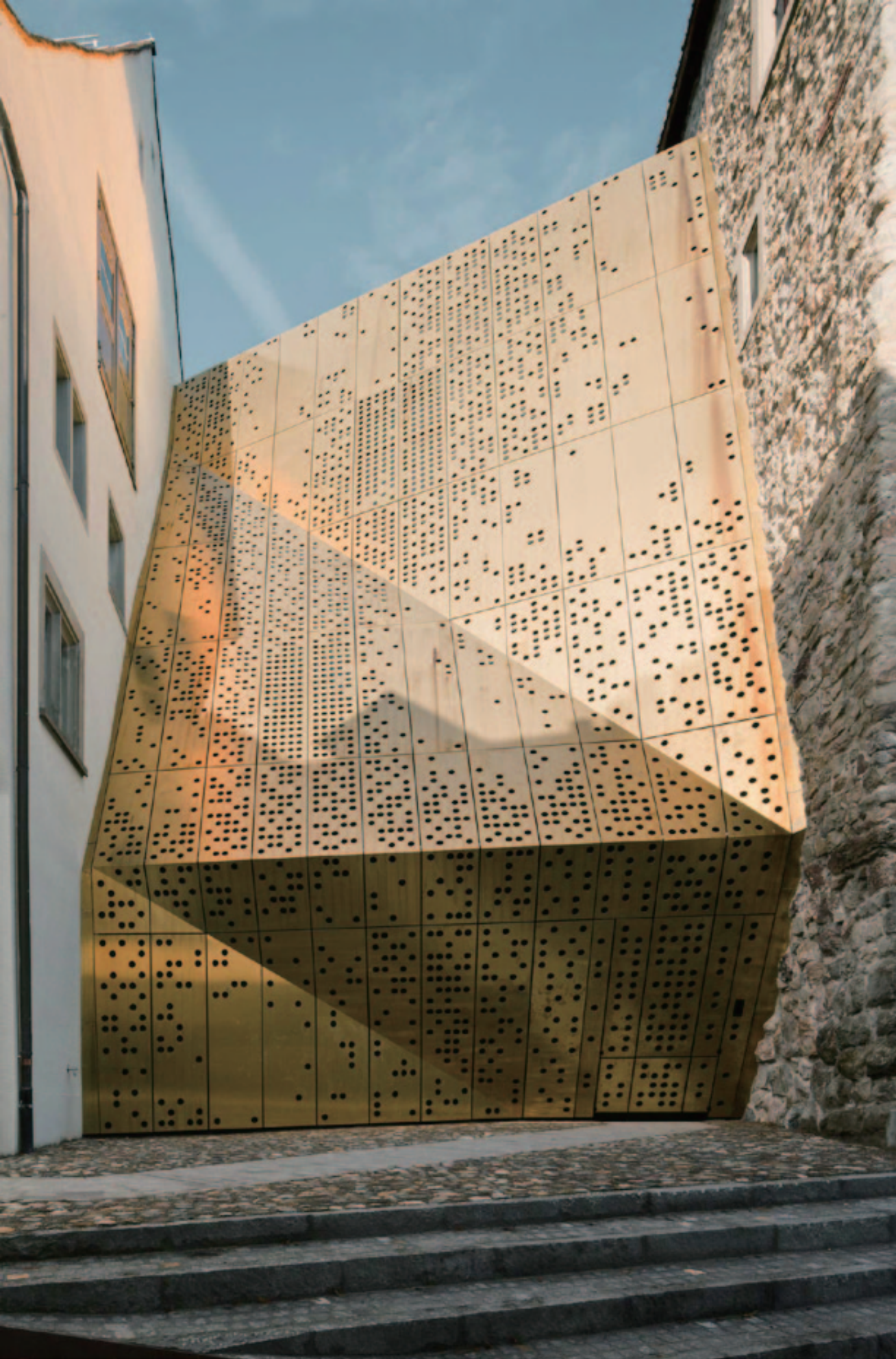
Hollow aluminium veneer is mostly used for interior and exterior wall decoration, which can play a role in shading, ventilation, beautifying the appearance of the building, and adding a lot of artistic flavor of life. In addition, hollow aluminium veneer can be recycled 100%, green and healthy.



Punch hollow carving board
SERIES
冲孔镂空雕花系列

The Art of Ventilation in Punching and Hollowing Aluminum Veneer
●冲孔镂空铝板通风艺术两不误





Punch hollow carving board SERIES 冲孔镂空雕花系列

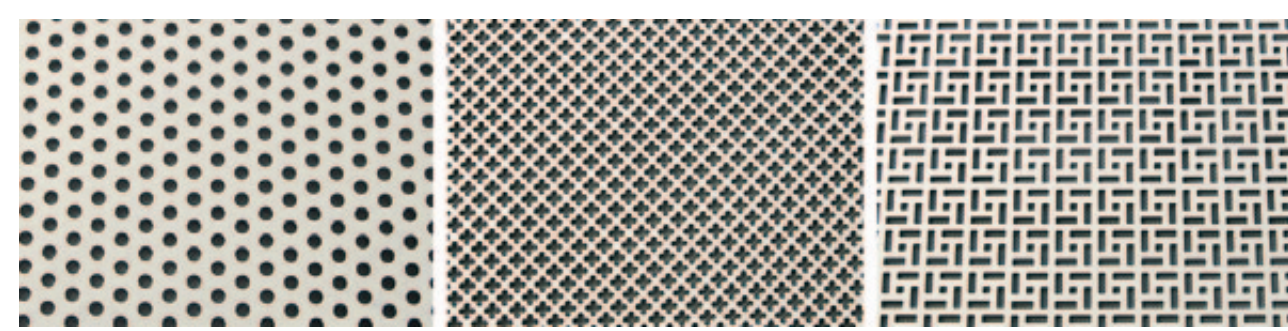
Exact hollowing out, no time for art
●精确镂空，无暇艺术

镂空铝单板能够根据人们的不同需求，利用大型激光雕刻机将铝单板加工成各式各样的花纹图案，如圆形、方形、三角形，菱形以及梅花形等等。镂空铝单板加工而成的不同花纹图案尽显经典优雅、自然清新的风格，增添了生活的气息，为单调的建筑装饰注入了生气，逐渐成为了人们心目中高贵时尚的代表装饰产品，其更以逼真的花纹雕刻所带来的强烈视觉冲激和三维立体触感效果引领当今时尚潮流。镂空铝单板是在氟碳涂膜基础上采用大型激光雕刻机经过一系列复杂工序加工而成，因此它具有氟碳涂膜抗酸雨、盐雾以及各种空气污染物，抗腐蚀性强，耐冷热性能极好、不褪色、不粉化，使用寿命长等特点。

Hollow aluminium veneer can be processed into various patterns by large laser engraving machine according to people's different needs, such as circle, square, triangle, rhombus and plum blossom, etc. The different patterns processed from hollow aluminium veneer show classical elegance and natural freshness, add to the breath of life, inject vitality into monotonous architectural decoration, and gradually become the representative decorative products of noble fashion in people's minds. It leads the fashion trend with the strong visual impulse and three-dimensional touch effect brought by realistic pattern carving. Hollow aluminium veneer is processed by a large laser engraving machine on the basis of fluorocarbon coating through a series of complex processes. Therefore, it has the characteristics of fluorocarbon coating anti-acid rain, salt spray and various air pollutants, strong corrosion resistance, excellent cold and heat resistance, non-fading, non-powdering and long service life.

Punch hollow carving board
SERIES
冲孔镂空雕花系列

Perfect carving makes beautiful Scenery
●完美的雕花，成就美丽的景观



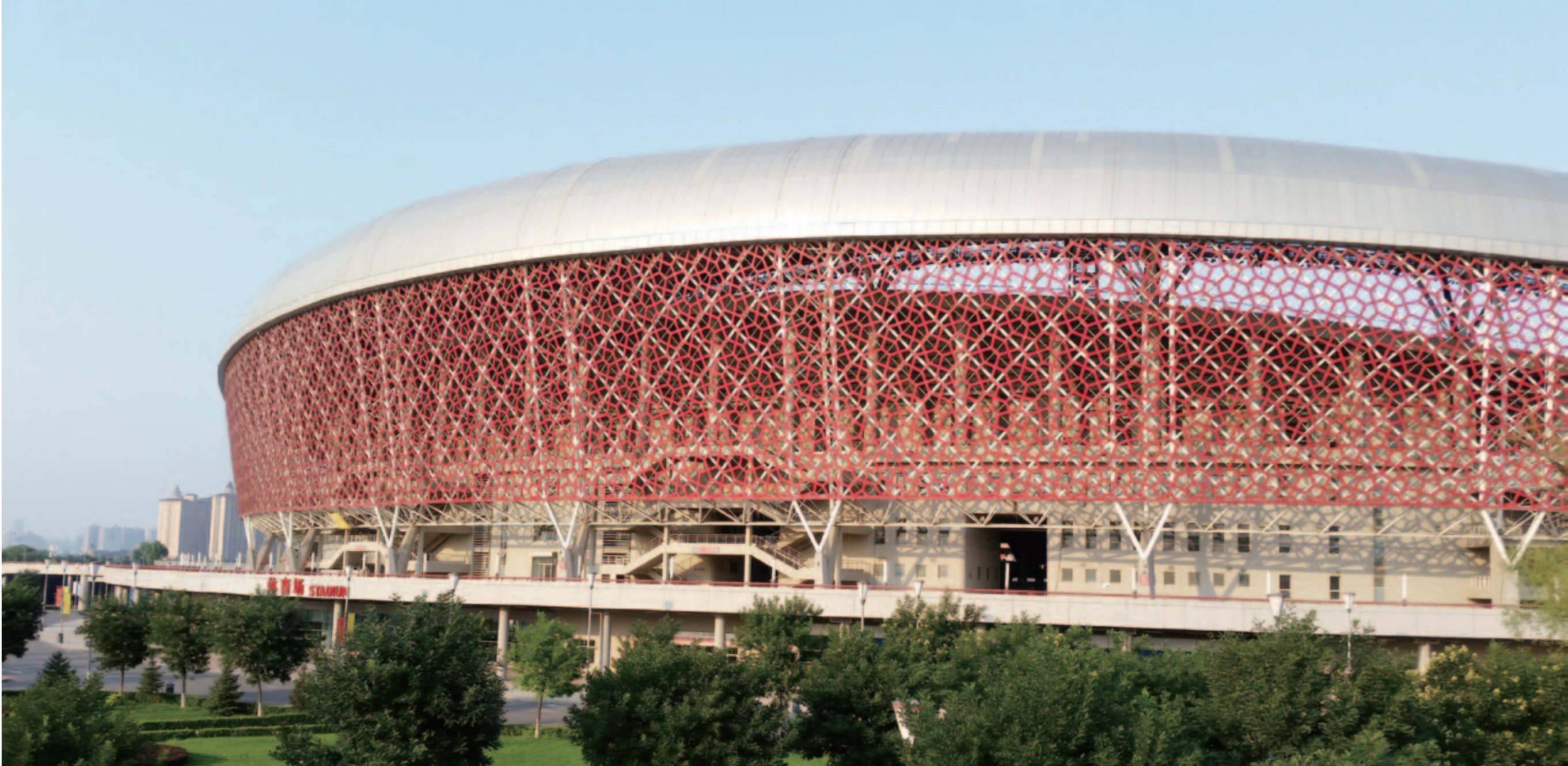
Punch hollow carving board
SERIES
冲孔镂空雕花系列

Health, Art and Wide Application
●健康、艺术、应用广泛

大型激光雕刻机经过一系列复杂工序加工而成的铝单板立体感强，效果更加逼真，也更接近天然花纹图案的特征，更具质感，能够给人以更加强烈的视觉和心理的冲击。

镂空铝单板多用于建筑内外墙装饰，可起到遮阳、通风，美化建筑外观，增添了不少生活艺术气息。除此之外，镂空铝单板可 100% 回收再利用，绿色环保健康。

Hollow aluminium veneer is mostly used for interior and exterior wall decoration, which can play a role in shading, ventilation, beautifying the appearance of the building, and adding a lot of artistic flavor of life. In addition, hollow aluminium veneer can be recycled 100%, green and healthy.



严谨的生产程序确保完美 | Strict production procedures ensure perfection

- 1、对优质高强度铝合金板材经过开料剪切、划线开角、折弯、滚弧、氩弧焊、打磨、组装、抛光等初步加工。
- 2、对经过初步加工的铝单板由铬化处理，采用大型激光雕刻机进行镂空加工，其中镂空的图案花纹等都可以根据客户个人的需求来量身定制。
- 3、利用氟碳喷涂技术让铝单板表面形成一层氟碳化膜。氟碳涂料主要为聚偏氟乙烯树脂，其主要分为底漆、面漆、清漆三种。喷涂过程一般分为三涂两烤或四涂三烤。其中三涂为喷底漆 + 面色漆 + 清漆（保护漆），四涂为喷底漆 + 隔离漆 + 面色漆 + 清漆（保护漆）。

1. Preliminary processing of high-quality and high-strength aluminium alloy sheets includes cutting, scribed angle, bending, arc rolling, argon arc welding, grinding, assembling and polishing.
2. After the initial processing of aluminium veneer by chromization, the hollowing process is carried out by large laser engraving machine. The hollowing patterns and patterns can be according to the needs of customers.Make it tailor-made.
3. Using fluorocarbon spraying technology to form a fluorocarbon film on the surface of aluminum veneer. Fluorocarbon coatings are mainly polyvinylidene fluoride resins, which are mainly divided into primer, topcoat and varnish. spray The coating process is generally divided into three coats, two bakes or four coats, three bakes. Three of them are spray primer + topcoat + varnish (protective paint), and four are spray primer + isolation paint + topcoat + varnish(Protective paint).

Screen window SERIES 屏风窗花系列

Characteristics of Wood-like Window Screen ●仿木纹窗花屏风特点

仿木纹铝隔断－铝屏风装饰具有突出的耐候性、耐磨损、耐腐蚀性等特性，且具有硬度高、不易变形、仿木真图案不褪色、不脱落等特点，适合餐厅室内外墙体各类场合使用。融合古典韵味的仿古气息，用铝合金打造独具现代化的仿古木纹餐厅铝窗花屏风，将中华传统的古典一直传承下去。

The wood-like aluminium partition-aluminium screen decoration has outstanding weatherability, wear resistance, corrosion resistance and other characteristics, and has high hardness, not easy to deform, wood-like patterns do not fade, do not fall off and other characteristics, suitable for restaurant indoor and outdoor wall use in various occasions. Fusion of classical flavor of antique flavor, using aluminum alloy to create a modern antique wooden dining room aluminum window screen, the Chinese traditional classical has been inherited.



Screen window SERIES 屏风窗花系列

Introduction of Imitated Wood Screen

●仿木纹屏风屏风介绍

仿木纹铝隔断－铝屏风作为新型的复古装饰材料，是复古建筑售选的建材产品之一，木纹复古格栅铝窗花造型多变，具有良好的通透性观赏性。本公司生产的墙体仿古木纹屏风隔断铝窗花采用铝型材四方管、或者是用铝单板雕刻按要求作成客户需求的产品造型，终加以外框而成型，表面处理使用氟碳喷涂木纹处理，让建筑更具复古中国风观赏性。

As a new type of retro decorative material, wood-like aluminium partition-aluminium screen is one of the selected building materials for retro buildings. The shape of wood-like retro grille aluminium window is changeable and has good permeability and ornamental. The wall imitated wood screen produced by our company partitions the aluminium window pattern by using aluminium profile square tube or carving with aluminium veneer as the product shape required by customers, and finally forms the outer frame and the surface. The treatment uses fluorocarbon spraying wood grain treatment to make the building more retro Chinese style ornamental.



Screen window
SERIES
屏风窗花系列

仿木纹铝隔断 - 铝屏风广泛用于各种建筑内外墙、大堂门面、柱饰、高架走廊、人行天桥、电梯包边、阳台包装、广告指示牌、室内异形吊顶等的装饰，建筑物外墙、梁柱、阳台、雨棚机场、车站、会议厅、歌剧院、体育场馆接待大堂等等高层建筑物，雕花铝单板也可以做形象背景墙，隔断，玄关，屏风，吊顶，吧台，门窗等。花格，隔断，家居装饰等工程。

Imitated wood-pattern aluminium partition-aluminium screen is widely used in decoration of interior and exterior walls, lobby facades, columns, viaducts, pedestrian overpasses, elevator rims, balcony packaging, billboards, indoor special-shaped ceiling, exterior walls of buildings, beams and columns, balconies, canopy airports, stations, conference halls, opera houses, stadiums reception halls and other high-rise buildings, carved aluminium veneers are also used. Can do image background wall, partition, porch, screen, ceiling, bar, doors and windows. Trellis, partition, home decoration and other projects.



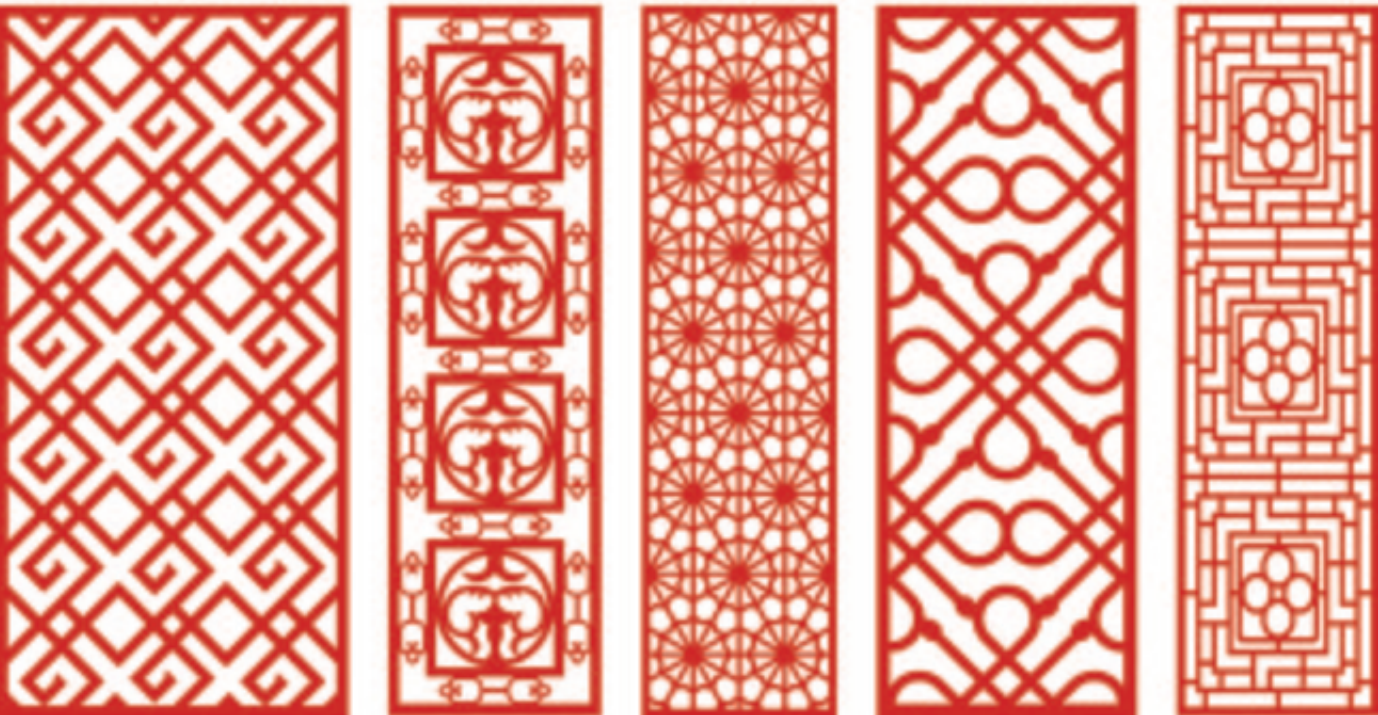
A001

A002

A003

A004

A005



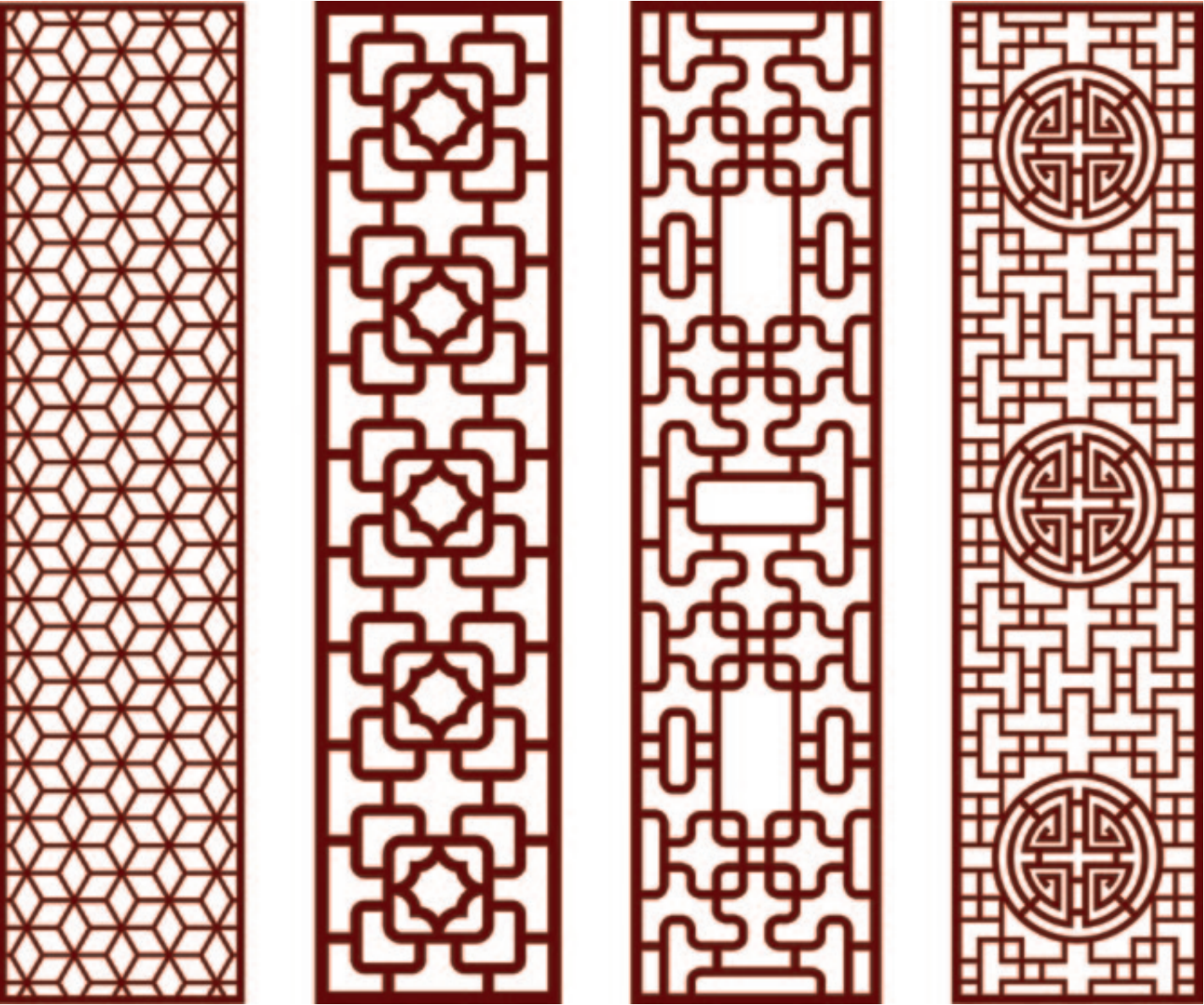
A006

A007

A008

A009

A010

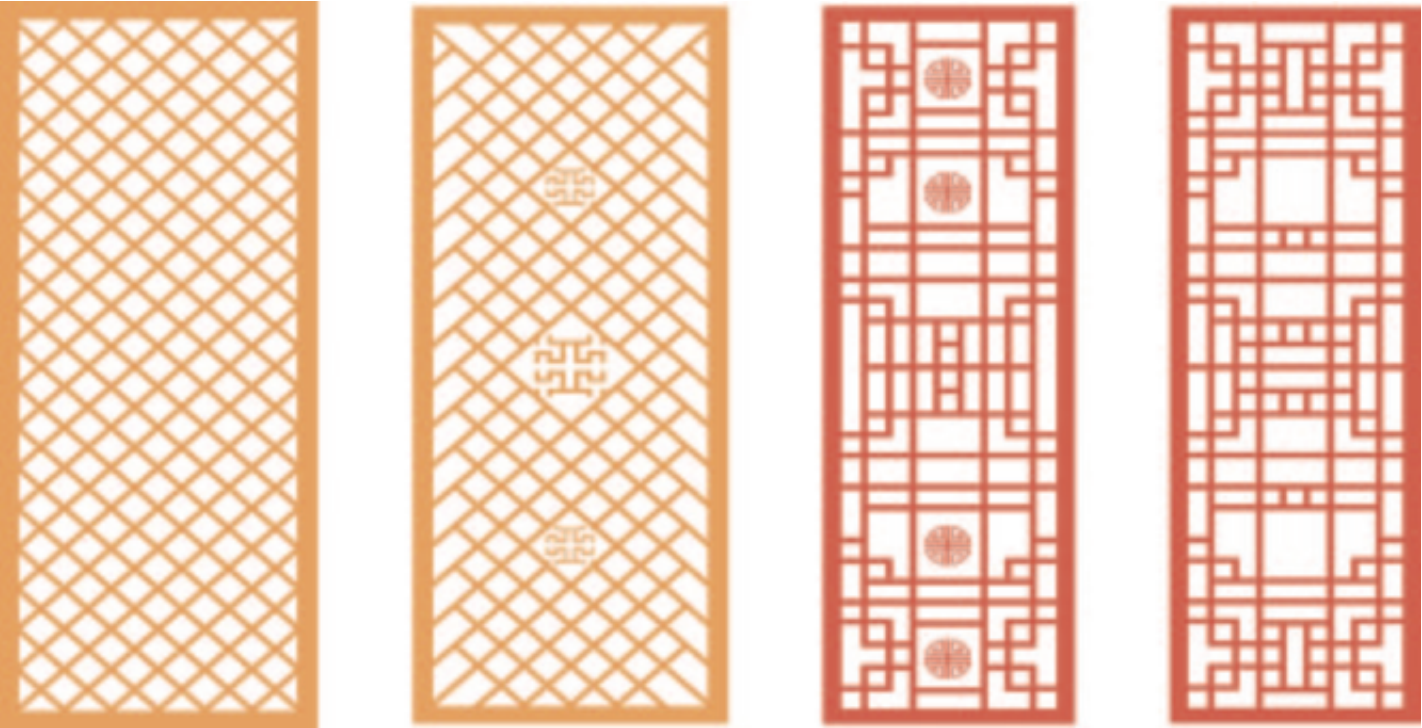


A011

A012

A013

A014

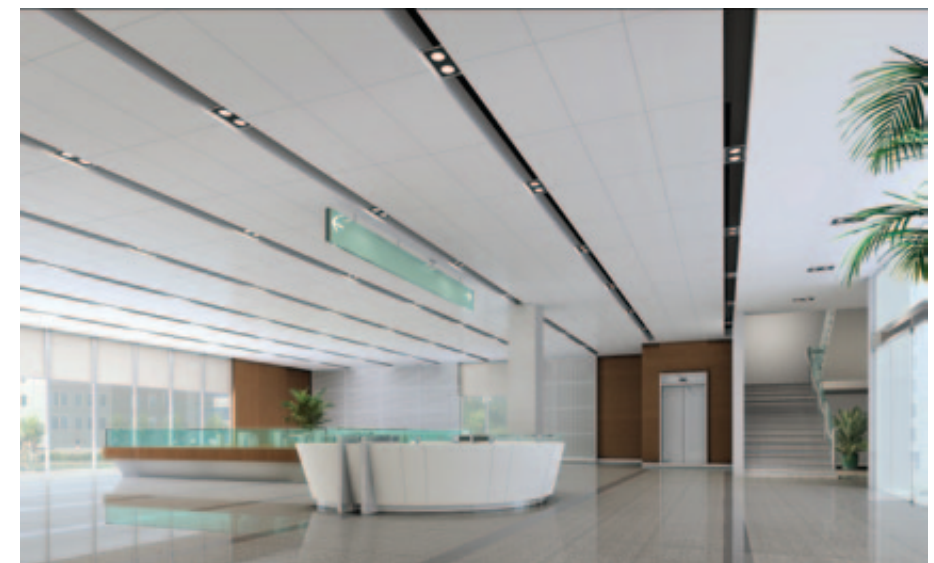


A015

A016

A017

A018



Hook up the ceiling SERIES 勾搭吊顶系列

Application of Aluminum Veneer for
Hanging Roof
● 勾搭吊顶铝单板应用

勾搭吊顶铝单板适用于各种建筑内外墙、如：机场、车站、医院、大堂门面、会议厅、歌剧院、高架走廊、人行天桥、阳台包装、室内异形吊顶等的装饰。

The hanging ceiling aluminium veneer is suitable for decoration of internal and external walls of various buildings, such as airport, station, hospital, lobby facade, conference hall, opera house, elevated corridor, footbridge, balcony packaging, indoor special-shaped ceiling, etc.





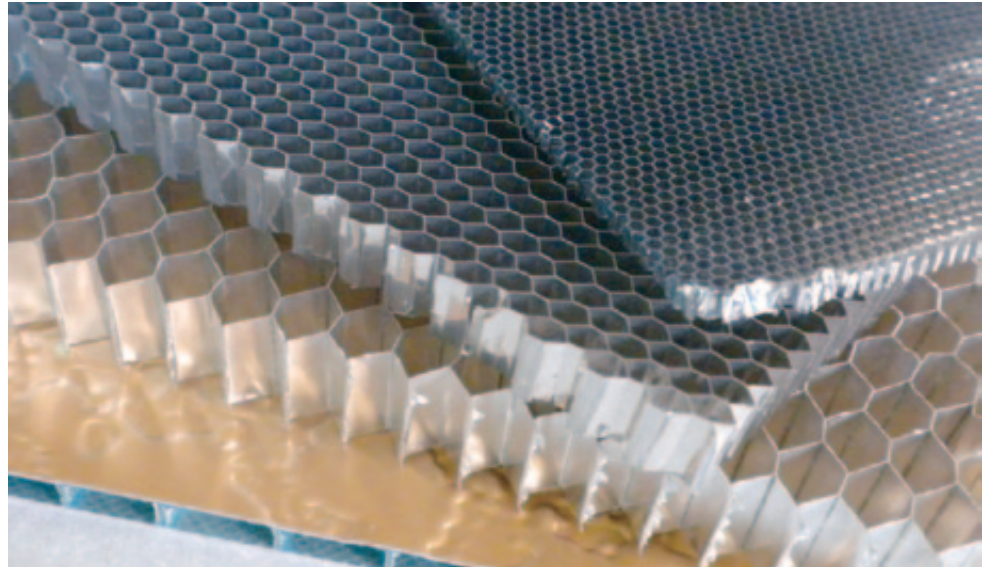
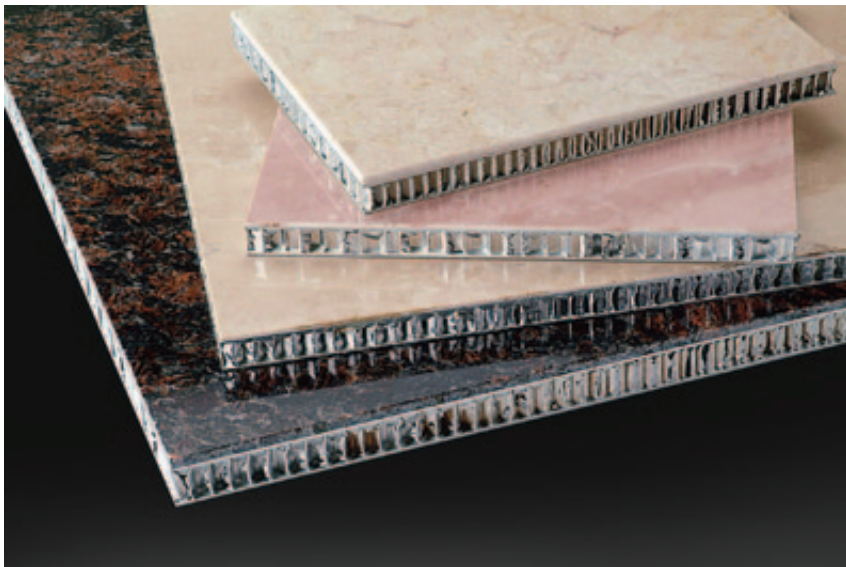
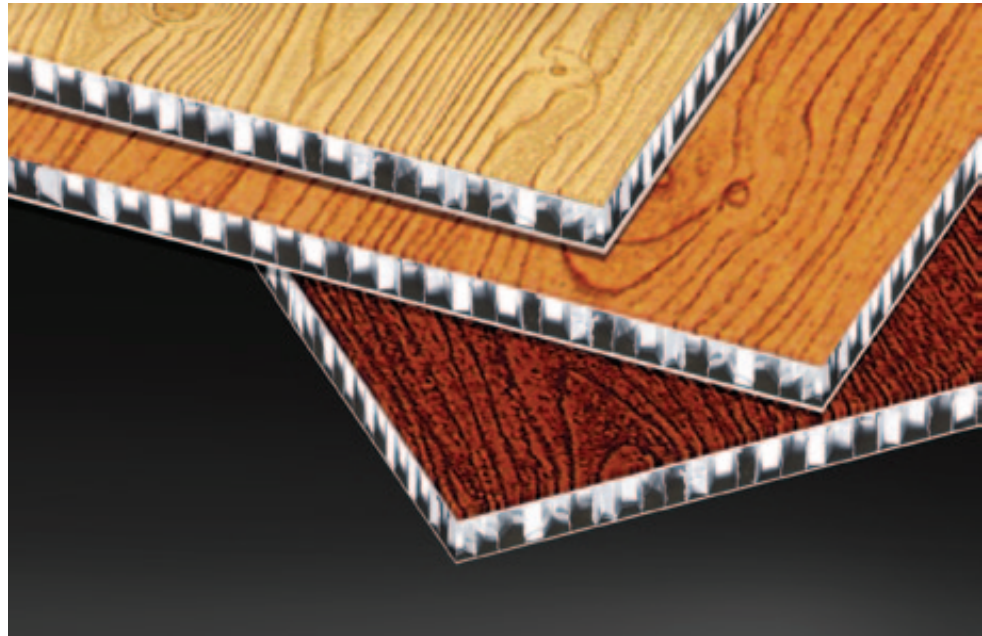
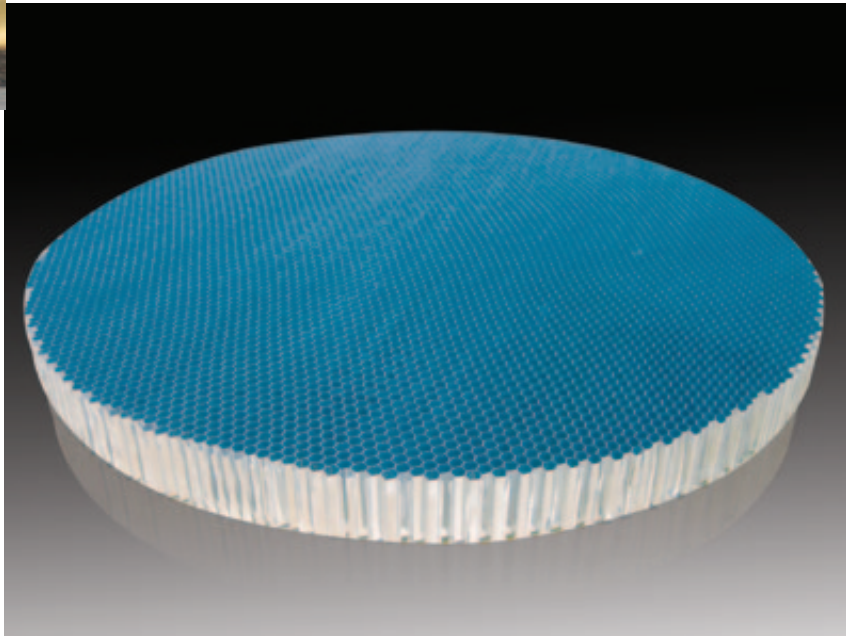
Characteristics of honeycomb panel

- High smoothness: The ideal plate with high smoothness is formed by the plant structure of high strength and light aluminium honeycomb core sandwiched between two layers of aluminium plate.
- Smooth surface: Smooth surface treatment of aluminium plate, smooth surface and minimum joint spacing make the whole ceiling area present a wide and flat appearance.
- Narrow Joints: This innovative panel system can achieve a minimum joint width of 3 mm, making the ceiling fresh and bright.
- High strength and long life: After marble and aluminium honeycomb board are compounded, the main performance index of natural stone is maintained, and the service life is long.
- High anti-pollution ability: Composite board can avoid various discoloration and stains on marble surface because of its harder and denser floor.
- Sound insulation, moisture proof, energy saving and consumption reduction: Because of its hollow aluminum honeycomb made of equilateral hexagon, it has the properties of sound insulation, moisture proof, heat insulation and cold proof.

Honeycomb aluminium veneer SERIES 蜂窝铝单板系列

蜂窝板特点 | Characteristics of honeycomb panel

- 高平整度：两层铝板中间夹以高强度、轻质铝蜂窝芯材的株型结构，形成这种平整度高的理想板材。
- 光滑的板面：铝板光滑的表面处理、平整的板面和最小的接缝间隔使整个吊顶区域呈现及为宽阔平整的外观效果。
- 细窄的接缝：这个创新的板材系统可以达到 3mm 的最小接缝宽度，使室内吊顶清新明丽。
- 高强度、长寿命：大理石与铝蜂窝板复合后，其抗弯、抗折、抗剪切的强度明显得 到提高，大降低了运输、安装、使用过程中的破损率。且保持了天然石材的主要性能指标，耐用年限长。
- 抗污染能力高：复合板因其底板更加坚硬致密，同时还有一层薄薄的胶层，可避免大理石表面可能出现的各种不同的变色和污渍。
- 隔音防潮、节能降耗：因其用等边六边型做成的中空铝蜂芯而拥有隔音、防潮、隔热、防寒的性能、在室内外安装后可较大降低电能和热能的消耗。

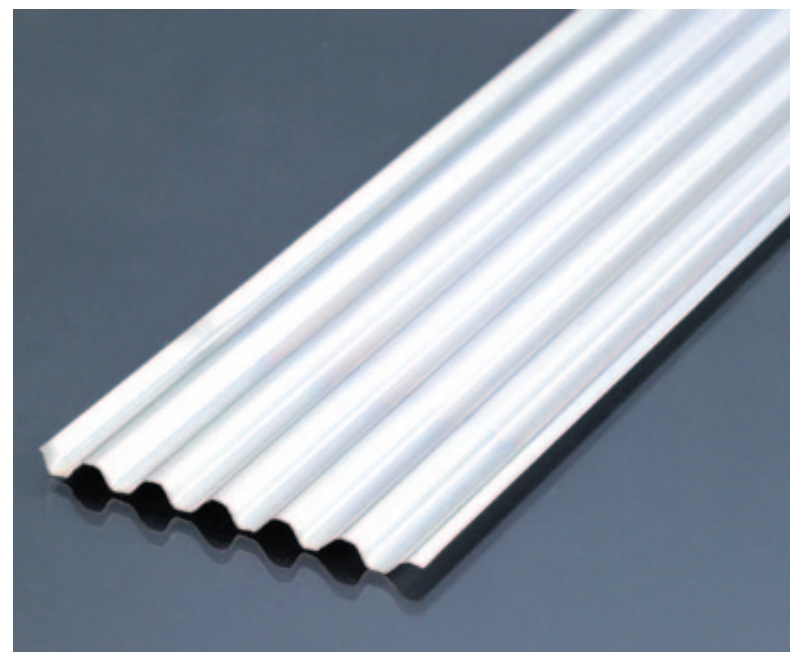
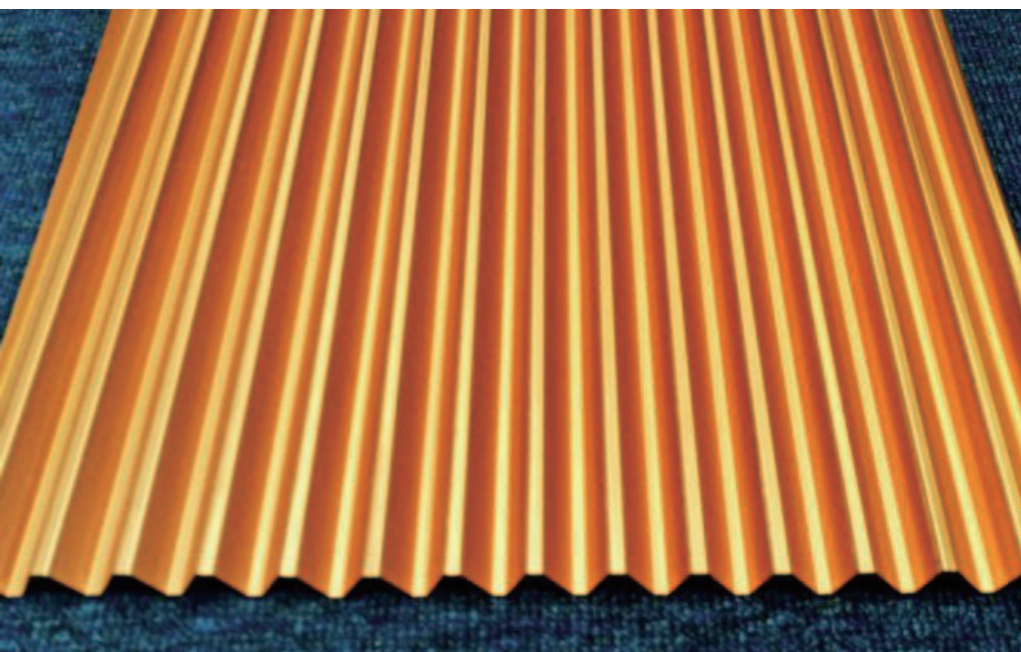


Corrugated board SERIES 瓦楞板系列

Corrugated board is based on current advanced technology
●瓦楞板采用隔壁目前金属吊顶及墙面先进技术为基础

瓦楞板吊顶及墙面技术改变了传统金属板吊顶单层板结构的厚重，和中空蜂窝无法制成曲面的缺点，使金属板 的材料使用量和重量可下降 30%，大大提高板材的结构性能，同时也节约材料的使用量。

Corrugated board ceiling and wall technology have changed the thickness of traditional metal plate ceiling single-layer plate structure and greatly improved the structural performance of the plate.



Corrugated board SERIES 瓦楞板系列

Introduction of Corrugated Board
●瓦楞板介绍

瓦楞板表层为 1.0-1.2mm 的铝板，背面采用 0.5mm 瓦楞状的钢板或铝质材料，采用环氧树脂粘结剂粘合，最大强度上保证铝板之间的粘结强度与均匀复合，通常分为单面瓦楞板与双面瓦楞板两种类型。

铝表面涂层：采用树脂涂料，能够有效抵抗酸雨、空气污染及紫外光的侵蚀，具有使用时间长、吸附能力强、光泽度好、耐老化、不变色等特点。表面平整，可以作为大幅装饰面板而 不变形，表面涂层均匀一致，易清洗；色彩丰富，隔音、隔热性能好，具绝佳的防火性能，达到防火 A 级。

Aluminum plate with 1.0-1.2 mm surface and 0.5 mm corrugated steel plate or aluminium material on the back and epoxy resin binder are used to bond the corrugated board. The maximum strength of the aluminum plate guarantees the bonding strength and uniform composite. Usually, the corrugated board can be divided into two types: single-sided corrugated board and double-sided corrugated board.

Aluminum Surface Coating: Resin coating can effectively resist acid rain, air pollution and ultraviolet light erosion. It has the characteristics of long use time, strong adsorption ability, good gloss, aging resistance and color invariance.

The surface is flat and can be used as a large decorative panel without deformation. The surface coating is uniform and easy to clean. It has rich color, good sound insulation and heat insulation. It has excellent fireproof performance and achieves fireproof grade A.

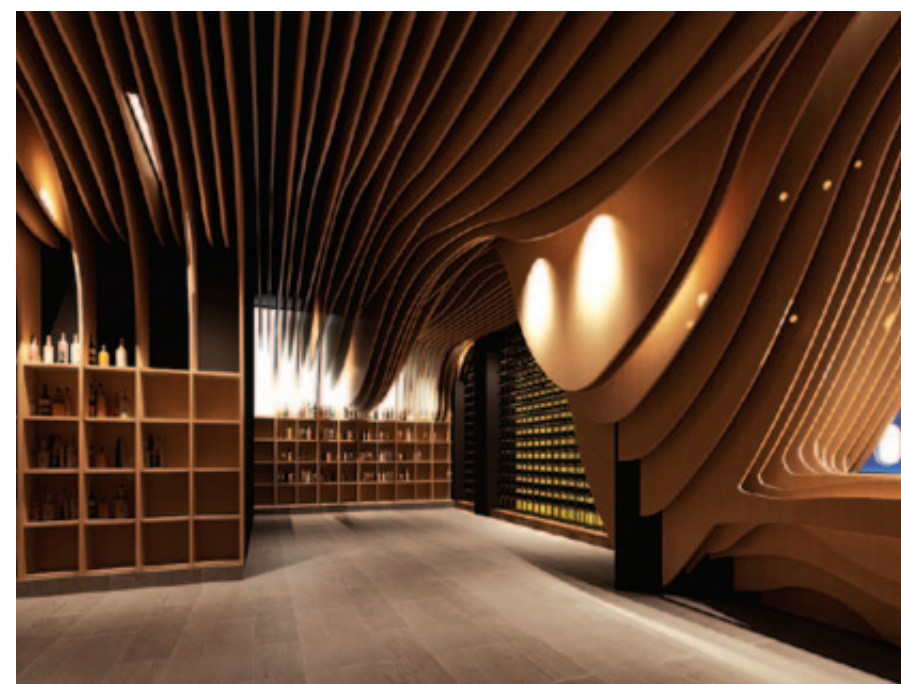


Arc square pass SERIES 弧形方通系列

Variable, strong plasticity
●千变万化，可塑性强

弧形方通合理的 颜色搭配，令设计千变万化，能够设计出不同的装饰效果。同时，弧形方通是通透式的，可以把灯具，空调系统，消防设备置于天花板内，以达到整体一致的完美视觉效果。弧形铝 方通的出现 为设计师提供更为广阔的构想空间，以创造出更独特美观的作品。

Arc square reasonable color matching, so that the design is ever-changing, can design different decorative effects. At the same time, the arc square pass is permeable, which can place lamps, air conditioning systems and fire fighting equipment in the ceiling to achieve the perfect visual effect of the overall consistency. The emergence of arc-shaped aluminium Fangtong provides designers with a broader space to conceive, in order to create more unique and beautiful works.



Arc square pass SERIES 弧形方通系列

弧形铝方通安装不同的铝方通是都可以选择不同的高度和间距，可一高一低，一疏一密，加上合理的颜色搭配，令设计千变万化，能够设计出不同的装饰效果。同时，由于铝方通是通透式的，可以把灯具，空调系统，消防设备置于天花板内，以达到整体一致的完美视觉效果。

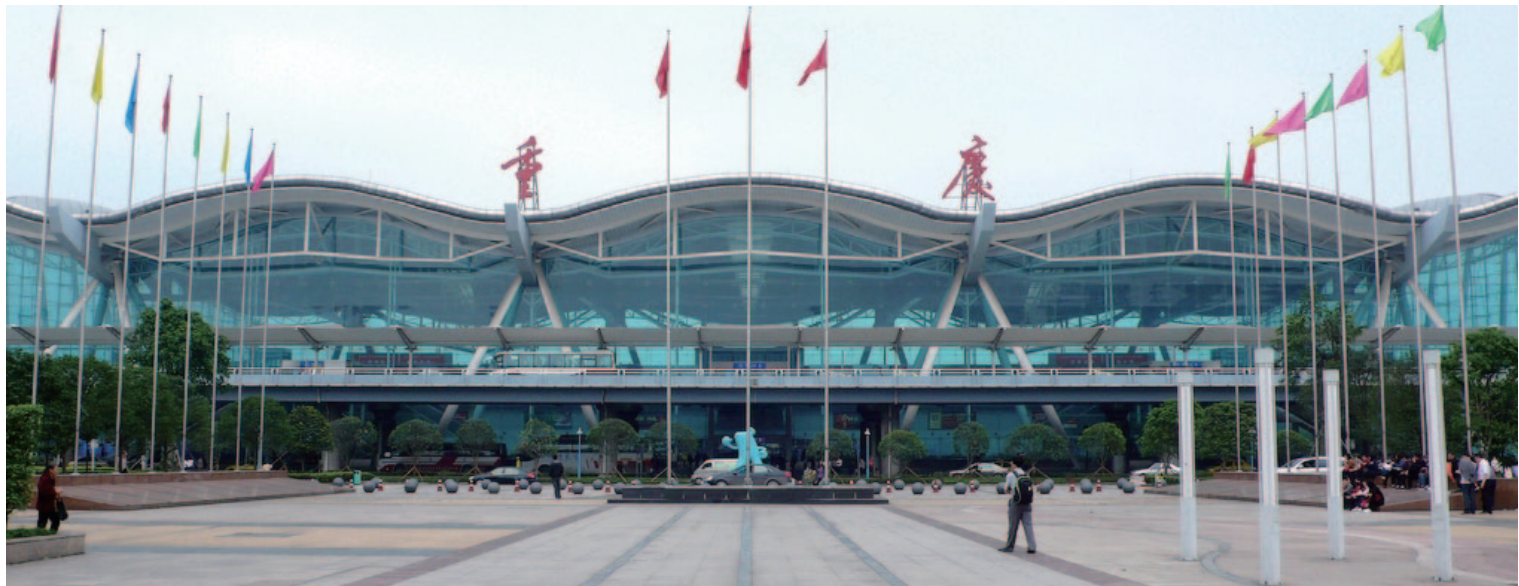
Arc Aluminum Square Tong can be installed with different Aluminum Square Tong can choose different height and spacing, making the design ever-changing, can design different decorative effects. At the same time, because the aluminum square is permeable, lighting, air conditioning system, fire fighting equipment can be placed in the ceiling to achieve the perfect visual effect of the overall consistency.



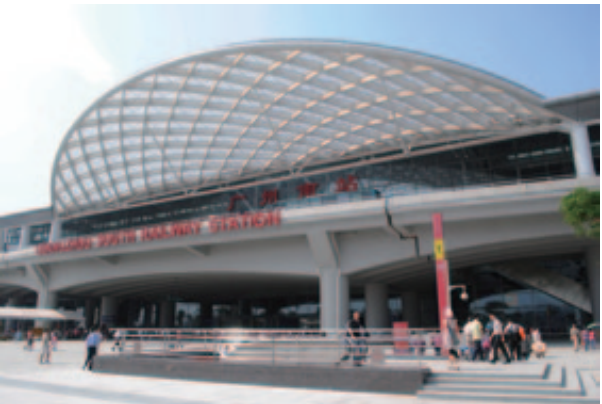
ENGINEERING EXHIBITION
工程展示



ENGINEERING EXHIBITION
工程展示



ENGINEERING EXHIBITION
工程展示



ENGINEERING EXHIBITION
工程展示



ENGINEERING EXHIBITION
工程展示



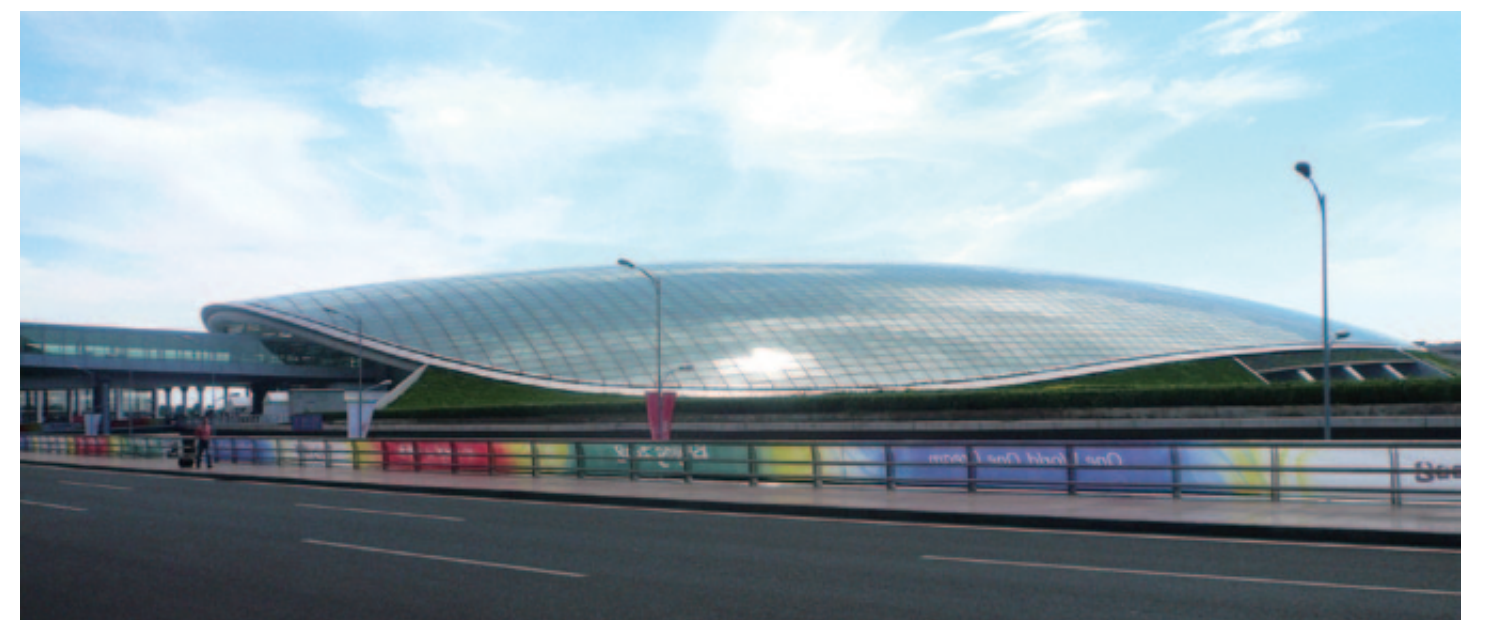
ENGINEERING EXHIBITION
工程展示



ENGINEERING EXHIBITION
工程展示



ENGINEERING EXHIBITION
工程展示



ENGINEERING EXHIBITION
工程展示



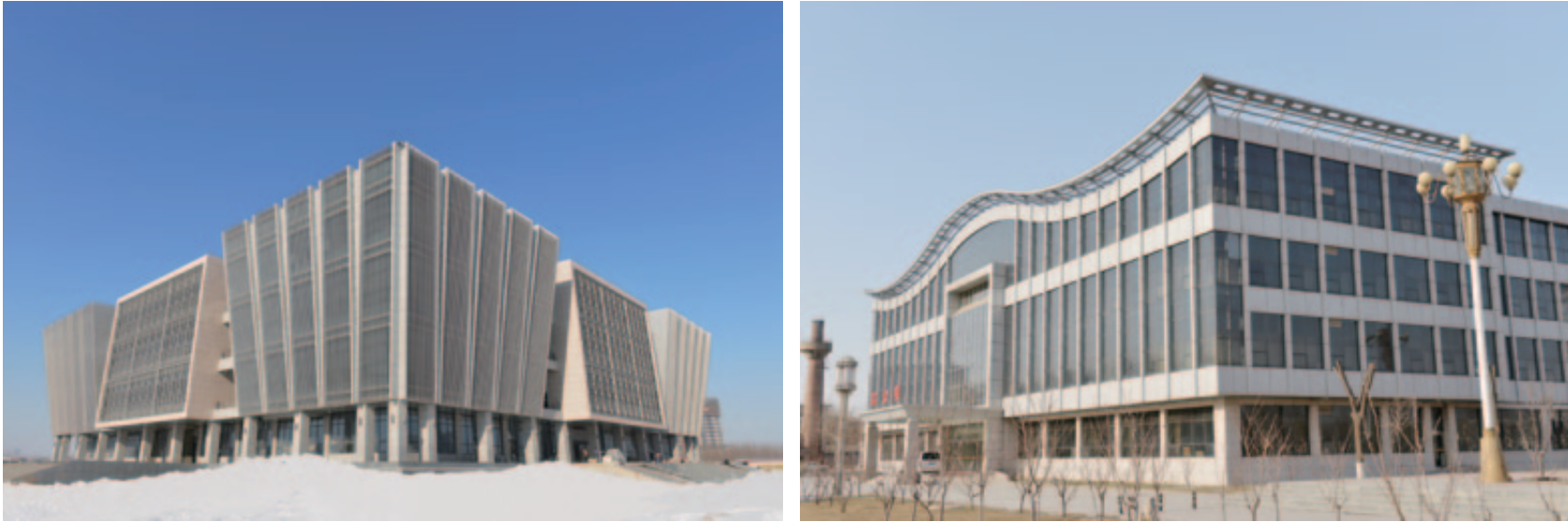
ENGINEERING EXHIBITION
工程展示



ENGINEERING EXHIBITION
工程展示



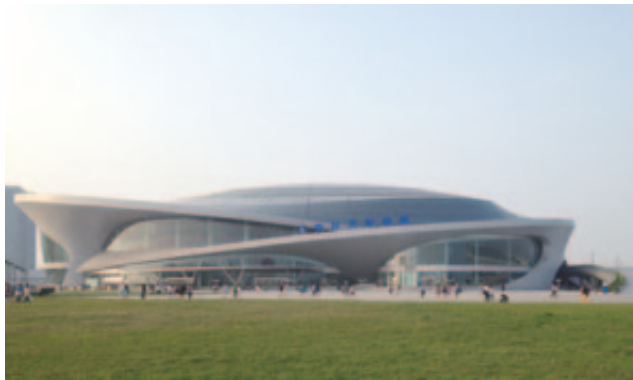
ENGINEERING EXHIBITION
工程展示



ENGINEERING EXHIBITION
工程展示



ENGINEERING EXHIBITION
工程展示



ENGINEERING EXHIBITION
工程展示



ENGINEERING EXHIBITION
工程展示



ENGINEERING EXHIBITION
工程展示

