

# Australian test report

A number of varieties through the Australian product quality inspection.



# Malaysia test report

Curtain wall products passed Malaysia product quality inspection.



## Project cases: Egypt project-Alamein Towers project.

Owner: Ministry Of Housing Utilities and Urban Development. Designer: YASSER AL BELTAGY ARCHITECT.

Engineer: ENGINEERING CONSULTANTS.



## Project Case: Australia project -1003 Wharf

Project Name :  
1003 Wharf

Number of floors :9

Square number :1680M<sup>2</sup>

Series :100 series

Address:  
1-3 WHARF ROAD,  
GLADESVILLE NSW 2111



## Project Case: Australia Project -1001 Bankstown GARDEN

Project name :  
2090 Esen ResidenceEsen  
Residence

Number of floors: 6

Number of squares: 2336M<sup>2</sup>

Series :100 series

Address :31 Edgewater  
BoulevardMaribyrnong,  
VIC 3032



## Project Case: Australia Project -2001 Q ueens Avn

Item Name:  
2001 Queens Avn

Number of floors: 6

Square number: 1415M<sup>2</sup>

Series:100 series

Address :29-31  
QueensAvenue, Hawthorn



## Project Case: Australian project -CASA Stage2

Item Name:  
CASA Stage 2

Number of floors: 10

Square number :2311M<sup>2</sup>

Series: Series 126

Address :7 Hadfield  
StErskineville NSW2043





## Project case: Australian project -QVM-Hub

Project name :QVM-Hub

Number of floors :9

Square number :4000M<sup>2</sup>

Series :100, 150 series

Address:  
CNR of Queen andTherry  
St. Mel.



## Project Case: Australian Project -2006 Paragon

Project Name:  
2006 Paragon

Number of floors: 5

Square number :1165M<sup>2</sup>

Series :100 series

Address:  
118 Miller street  
Pymont,NSW 2008



## Project Case: Australian Project -Keele

Project name :Keele

Number of floors :8

Square number :3500M<sup>2</sup>

Series :100, 126 series

Address:  
17COKE 6-10 KeeleStreet  
COLLINGWOOD



## Project Case: Australia Project -2008 Nelson Street

Project name :  
2008 Nelson Street

Number of floors :8

Square number :8338M<sup>2</sup>

Series :100 series

Address:  
42-58,Nelson  
StreetRingwood, Vic



### Project Case: Australian project -Metropolitan

Project name :Metropolitan

Number of floors :11

Square number :4000M<sup>2</sup>

Series :100 series

Address:  
7-19 Albany St,St  
Leonards,NSW 2065



### Project Case: Australian project -CENTRALGARDEN

Project Name:  
CENTRAL GARDEN

Number of floors: 9

Square number :3500M<sup>2</sup>

Series :150, 200 series

Address:  
5-7 Bruce St, Box Hill,  
VIC 3128



### Project Case: Australia Project -LUMA

Project Name:  
LUMA

Number of floors :8

Square number :3500M<sup>2</sup>

Series :85 series

Address :6 Hight  
Street,Windsor, VIC 3181



### Project Case: Australian project -Gheringhap

Project name :Gheringhap

Number of floors :10

Square number :4000M<sup>2</sup>

Series: Series 126

Address:  
8 Gheringhap St,  
Geelong, vic 3215



## Project Case: Australian Project -MOPO

Project Name:  
MOPO  
Number of floors :10

Square number :3000 M<sup>2</sup>

Series :100, 126 series

Address:  
333 Ascot Vale Road,  
Moonee Ponds, VIC 3039



## Project Case: Australian project -LATERN

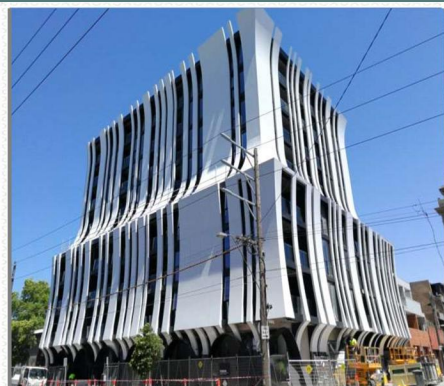
Project name :  
LATERN

Number of floors :8

Square number :3000M<sup>2</sup>

Series: 100 series

Address:  
195 WELLINGTON  
ST. COLLINGWOOD, VIC  
3066



## Project Case: Australian Project -Eastern

Project name :  
Eastern

Number of floors :8

Square number :3350M<sup>2</sup>

Series :126, 150 series

Address:  
74 Eastern Rd, South  
Melbourne, VIC 3205



## Project Case: Australian Project -2087 Normanby

Project Name:  
2087 Normanby

Number of floors :41

squares :13000M<sup>2</sup>

Series: 100, 150 series

Address:  
4-6 Normandy Road Elwood





## Project Case: Australian project -Altitude

Project name :Altitude

27 Layers:

Number of Squares:  
7500 M<sup>2</sup>

Series :100, 126 series

Address:  
1 Boys Avenue,  
Blacktown,nsw 2148



## Project Case: Australia Project -597 the United

Project name :597 the United

Number of layers: 7

Square number :2188M<sup>2</sup>

Series:85 series

Address:  
203 Burnley  
Street,Richmond, VIC 3121



## Project Case: Australia project -Harbour front

Project Name:  
Harbour front

Number of floors :7

Number of Squares:  
5500M<sup>2</sup>

Series :85, 100 series

Address:  
4/1-13 Atkinson r d  
Tarenpoint,nsw 2229



## Project Case: Australia project -Hyatt Hotel

Project name :  
Hyatt Hotel

Number of floors :8

Number of Squares:  
5900M<sup>2</sup>

Series: Series 126

Address:1 English St,  
EssendonFields, VIC 3041



### Project Case: Australia project -M Dockland

Project Name:  
M Docklands

Number of floors :25

Square number :6000M<sup>2</sup>

Series :85, 126 series

Address:  
677 LaTrobe Street,  
Docklands,VC 3008



### Project Case: Australia Project -Botanica

Project Name :Botanica

Number of floors :27

Square Number :8200M<sup>2</sup>

Series: 126, 150 series

Address:  
188 Whitehorse  
Road,Balwyn, VIC 3103



### Project Case: Australian project -Royal Elizabeth

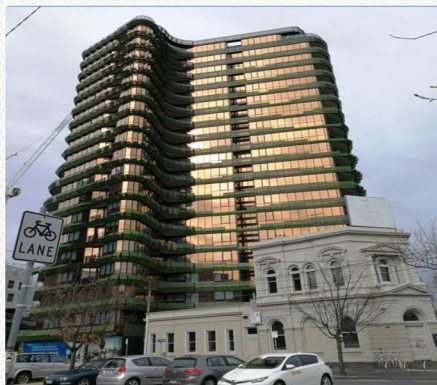
Project name :  
Royal Elizabeth

Number of floors :22

squares :5000M<sup>2</sup>

Series :126, 150 series

Address:  
151 BERKELEY  
ST,MELBOURNE,VIC 3000  
Two lanes



### Project Case: Australian project -Radiance

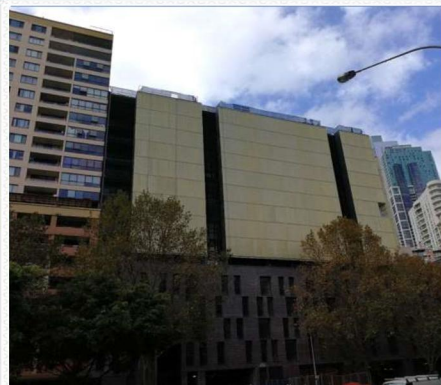
Project Name:  
Radiance

Number of floors :22

Square number :8200M<sup>2</sup>

Series: Series 126

Address:  
188 Day St, Sydney,NSW  
2000





## Project Case: Australian project -THE Casteleragh

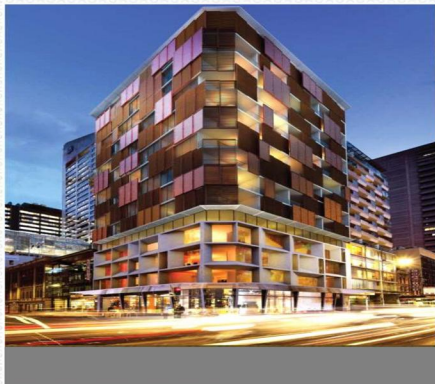
Project Name:  
THE Casteleragh

Number of floors :15

Square number :6800M<sup>2</sup>

Series :100, 126 series

Address:  
209 Casteleragh  
St,Sydney,NsW 2000



## Project Case: Australian project -Northwood

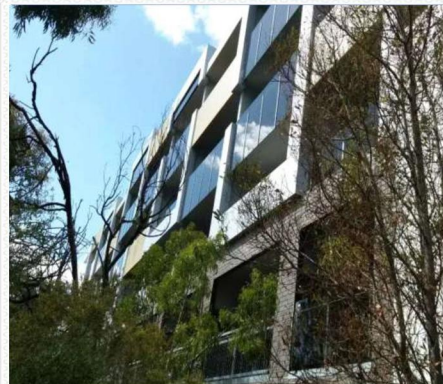
Project Name:  
Northwood

Number of floors :6

Square number :3800M<sup>2</sup>

Series :126, 150 series

Address:  
392 St George Road,Fitzroy  
North VIC 3068



## Project Case: Australia Project -A Place to Live

Project name :  
A Place to Live

Number of floors :7

Square number :3900M<sup>2</sup>

Series :150 series

Address:  
520 Victoria Street,Richmond,  
VIC 3121



## Project Case: Australian project -COVENTRY HAUS

Project name :  
COVENTRY HAUS

Number of floors :22

squares :5000M<sup>2</sup>

Series: Series 126

Address:  
33 Coventry Street,  
SouthBank,VIC 3006



## Project Case: Australian project -Magnolia

Project name :  
Magnolia

Number of floors :15

Square number :7800M<sup>2</sup>

Series: 100, 150 series

Address :20-24 Hopburn  
Road,Doncaster,VIC 3108



## Project name :THE Gallery

Project name :  
Playhouse

Number of floors:10

Square number :6500M<sup>2</sup>

Series :100, 126 series

Address :16 Flockhart  
Street,Abbotsford VIC 3067



## Project Case: Australian Project -THE Gallery

Project name :  
THE Gallery

Number of floors :6

Square number :3300M<sup>2</sup>

Series :85, 126 series

Address :562 Pacific  
Hwy,Chatswood,NSW 2067



## Project Case: Australian project -Futura

Project name :  
Futura

Number of floors: 12

Square number :2800M<sup>2</sup>

Series :100, 126, glass railing

Address:  
103-105 O'Riordan Street,  
Mascot, NSW 2020



## Project Case: Australian Project -Mink

Project Name:

Mink

Number of floors: 6

Number of Squares:

3500M<sup>2</sup>

Series :100, 150 series

Address:

110 Keilor Road,Essendon  
North, VIC 3041



## Project case: SCOUT APARTMENTS in Australia

Project Name:

SCOUT APARTMENTS

Number of floors: 8

Number of Squares:

3800M<sup>2</sup>

Series: 126, 150 series

Address:

10-13 PORTER ST,  
PRAHRAN,VIC 3181



## Project Case: Australian project -GEOX

Project Name:

GEOX

Number of floors: 6

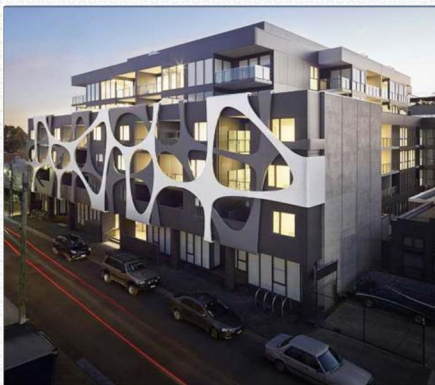
Number of Squares:

3000M<sup>2</sup>

Series:85, 126 series

Address:

37 Breest St,  
Brunswick, VIC 3056



## Project Case: Australian project -UPPERHOUSE

Project Name:

UPPERHOUSE

Number of floors: 20

Number of Squares:

3500M<sup>2</sup>

Series:100 series

Address:

520 Swanston St,  
Carlton, VIC 3053





## Project Case: Australian project -576 Gravity

Project Name:  
576 Gravity

Number of floors: 28

Number of Squares: 7800M<sup>2</sup>

Series: 100, 126 series

Address:  
89 Gladstone Street,  
Southbank VIC 3006



## Project Case: Australian project -IKEBANA

Project Name:  
IKEBANA

Number of floors: 9

Number of Squares:  
3800M<sup>2</sup>

Series: 100, 150 series

Address:  
Dudley Street, West  
Melbourne, VIC 3003



## Project Case: Australia Project -2019 THE PEAK

Project name :  
2019 THE PEAK

Number of floors :46

Square number :7800M<sup>2</sup>

Series: 100 ,150series

Address:  
141 La trobe st & 25-27  
Bennetts Ln, Melbourne



## Project Case: Australian project -Silverleaf

Project Name:  
Silverleaf

Number of floors :15

Square number :4800M<sup>2</sup>

Series :85 series

Address:  
Silverleaf, 328Kingsway,  
South Melbourne, VC 3205



### Project Case: Australia Project -Lakeside

Project name :  
Lakeside

Number of floors :6

Square number :5538M<sup>2</sup>

Series :126, 150 series

Address:  
10 Lakeside  
Crescent,Maribyrnong, VIC  
3032



### Project Case: Australian project -STRATUS

Project name :  
STRATUS

Number of floors :8

Square number :3000M<sup>2</sup>

Series :100, 150 series

Address:  
360 Lygon  
Street,Brunswick, VIC 3056



### Project Case: Australian Project -Erantis

Project Name:  
Erantis

Number of floors: 4

Square number :3000M<sup>2</sup>

Series :100 series

Address:  
76-78 Keilor Rd,North  
Essendon, VIC 3041



### Project Case: Australian project -The Riversdie

Project name :  
The Riversdie

Number of floors: 10

Square number :5500M<sup>2</sup>

Series :126, 200 series

Address:  
1 Moreland  
Street,Footscray, VIC 3011



### Project Case: Australian project - 584

Project name :  
584 THE INTERNATIONAL

Number of floors : 39

Square number :6800M<sup>2</sup>

Series :100, 126, 200series

Address :61 Haig Street,  
SouthBank,VIC 3006



### Project Case: Australia Project -1001 Bankstown GARDEN

Project Name:  
1001 Bankstown GARDEN

Number of floors :12

Square number :5800M<sup>2</sup>

Series:100 series

Address :26 Meredith  
St,Bankstown,NSW  
2200Australia



### Project Case: Australia Project -418 Gardenhurs

Project name :  
418 Gardenhurst

Number of floors :4

Square number :2140M<sup>2</sup>

Series: 85, 100 series

Address:  
82-86 Bulla  
Road,Strathmore VIC 3041



### Project Case: Australia Project -14 Ban 88

Project Name:  
14 Ban 88

Number of floors :33

Square number :7900M<sup>2</sup>

Series :150 series

Address:  
33 Clarke St, SouthbankVIC  
3006





## Product portfolio drawing

Aluminum sill

Aluminum guardrail

Glass bull enclosure

French window

Balcony sliding door





Products: Lift window  
Material: Aluminum alloy + glass  
Photograph: Australian completion project site  
Enable: Manually enable  
Applicable: Kitchen, balcony window, narrow lane area



Products: Folding shade shutter  
Material: Aluminum alloy  
Photograph: Australian completion project site  
Enable: Manually enable  
Application: office/apartment exterior walls, corridors



Product: building exterior wall sunshade decoration  
Material: Aluminum alloy  
Photograph: Australian completion project site  
Open: Fixed



Products: Aluminum railings  
Material: Aluminum alloy  
Photograph: Australian completion project site  
Open: Fixed  
Applicable: Apartment, villa balcony





Product: Aluminum shading louver - oval  
Material: Aluminum alloy  
Photograph: Australian completion project site  
Open: Manually open + fixed  
Applicable: office/hospital/shopping mall aisle, laundry room, rest area



Products: Glass shutter  
Material: Aluminum alloy + single glass  
Photograph: Australian completion project site  
Enable: Manually enable  
Applicable: office/hospital aisles, shopping malls, laundry rooms



Product: Aluminum alloy shutter arc  
Material: Aluminum alloy  
Photograph: Australian completion project site  
Open: Fixed  
Applicable: office/hospital access, equipment room, rest area



Products: Aluminum alloy louver bevel  
Material: Aluminum alloy  
Photograph: Australian completion project site  
Open: Fixed + manual door and window louvers





### Dimax 100 single aluminum series Upper hanging window, two rail push and pull

Maximum size: W4500\*H3000mm

Wall thickness: 2.0mm

Glass: Max 6+15+6

Accessories: Stainless steel pulley (two wheels, four wheels)

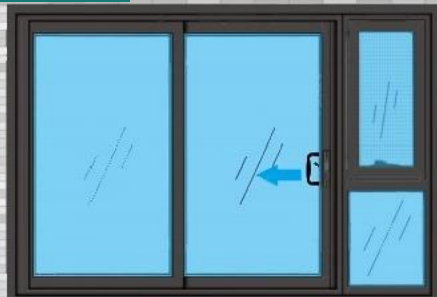
Handle: Doric handle lock, Jian Lang handle lock

Regular color: gray, low light black, brown

Features: Dimax unit type doors and Windows, a variety of window types can be real

Current meaning combination: deep trough under rail drainage and side drainage design, watertight, air tightness, good wind pressure resistance, The design of the lower rail is diversified to adapt to different grades and uses;

Diamond net can be configured.



### 150 single aluminum series Upper hanging window, three rail push and pull

Maximum size: W4500\*H3000mm

Wall thickness: 1.4, 3.0mm

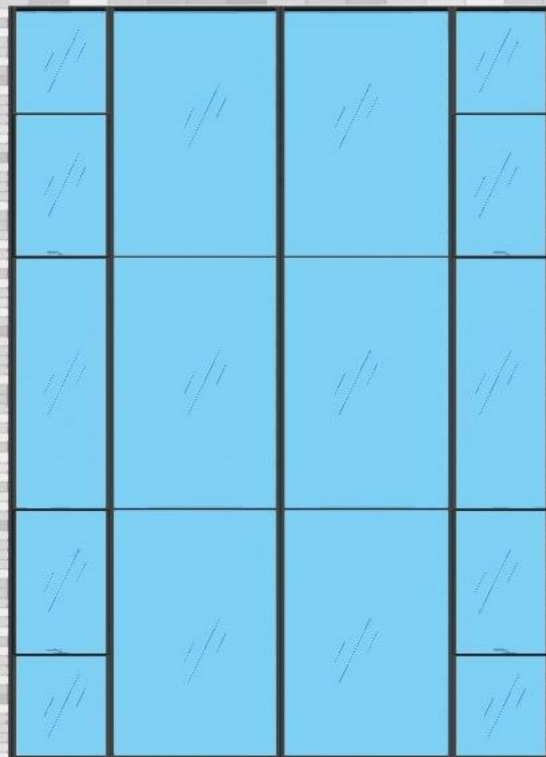
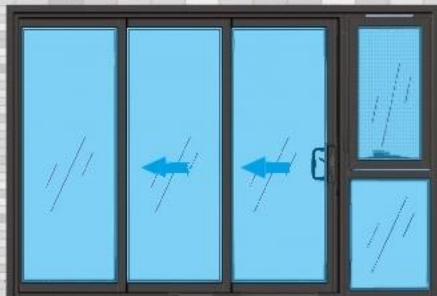
Glass: Max 6+15+6

Accessories: Stainless steel pulley (two wheels, four wheels)

Handle: Doric handle lock, Jian Lang handle lock Conventional

color: gray, low light black, brown

Features: Dimax unit type doors and Windows, a variety of quiet types can be combined: deep trough under rail drainage and side drainage design, watertight, air tightness, wind pressure resistance; The design of the lower rail is diversified to adapt to different grades and uses; Diamond net can be configured.



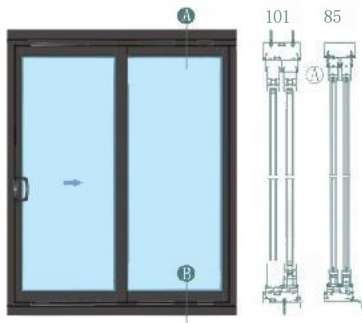
### Dimax 120 single aluminum series semi-hidden curtain wall (unit module)

Wall thickness: 3.0mm Glass: Max 6+15+6

Handle: Doric handle corrosion, Jian Lang handle lock Regular color: gray, low light black, brown

Features: Dimax unit glass, orange hidden vertical frame glass; Mature structure and no drainage, bridge insulation and isobaric cavity design

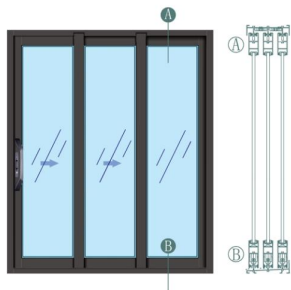
Dimax 85 single aluminum, 101 heat insulation series sliding door, sliding window (two rails).



Maximum specification: W3000\*H3000mm  
Wall thickness: 2.0mm  
Glass: Max 6+15+6  
Accessories: Stainless steel pulley (two wheels, four wheels)  
Handle: Doric handle lock, Jian Lang handle lock  
Regular color: gray, low light black, brown

Features: Stainless steel track makes the product quiet and smooth; The real meaning of the insulation effect brings you comfortable room temperature, energy saving emissions are more environmentally friendly.

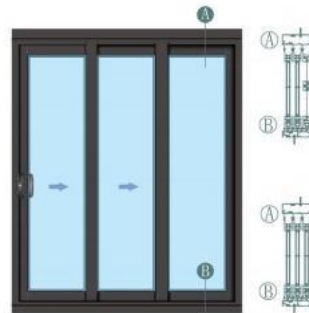
Dimax 126 Single aluminum series sliding door, sliding window (three rails)



Maximum size: W4500\*H3000mm  
Wall thickness: 2.0mm  
Glass: Max 6+15+6  
Accessories: Stainless steel pulley (two wheels, four wheels)  
Handle: Doric handle lock, Jian Lang handle lock  
Regular color: gray, low light black, brown

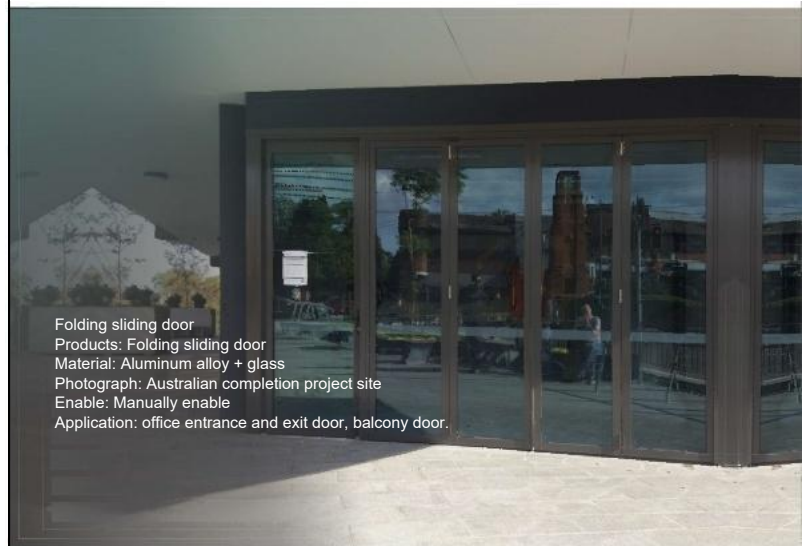
Features: stainless steel track quiet, smooth; The real meaning of the insulation effect brings you comfortable room temperature, energy saving emissions are more environmentally friendly.

Dimax 152 Thermal Insulation series Sliding door, sliding window (3 rails)



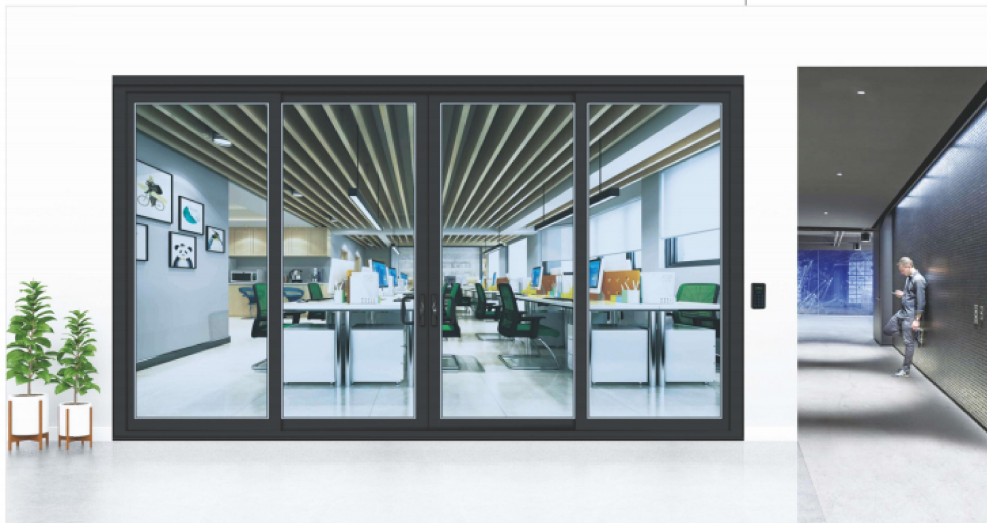
Maximum specification: W3000\*H3000mm  
Wall thickness: 2.0mm  
Glass: Max 6+15+6  
Accessories: Stainless steel pulley (two wheels, four wheels)  
Handle: Doric handle lock, Jian Lang handle lock  
Regular color: gray, low light black, brown

Features: Stainless steel track makes the product quiet and smooth; the real insulation effect brings you comfortable room temperature, energy saving emissions are more environmentally friendly.



Folding sliding door  
Products: Folding sliding door  
Material: Aluminum alloy + glass  
Photograph: Australian completion project site  
Enable: Manually enable  
Application: office entrance and exit door, balcony door.

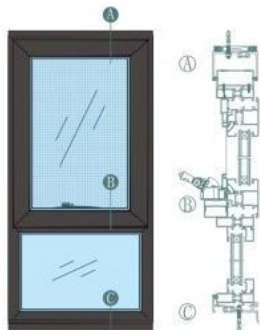
system	series	wall thickness	Number of tracks	Handle lock brand	Sliding door/window + gauze fan		Door/window type
Bridge breaking system	101mm	2.0mm	2	Doric/KIN LONG	Push-pull glass door + no gauze fan	Push-pull window glass fan + fixed yarn fan	A/B
	152mm	2.0mm	3	Doric/KIN LONG	Sliding door glass fan + push-pull yarn fan	Push and pull window glass fan + push and pull yarn fan	A/B
	252mm	2.0mm	5	Doric/KIN LONG	Sliding door glass fan + push-pull yarn fan	Push and pull window glass fan + push and pull yarn fan	C/D/E
Non-broken bridge system	85mm	2.0mm	2	Doric/KIN LONG	Sliding door glass fan + no yarn fan	Push-pull window glass fan + fixed yarn fan	C/D/E
	100mm	2.0mm	2	Doric/KIN LONG	Sliding door glass fan + no yarn fan	Push-pull window glass fan + fixed yarn fan	E/F/G
	126mm	2.0mm	3	Doric/KIN LONG	Sliding door glass fan + push-pull yarn fan	Push and pull window glass fan + push and pull yarn fan	E/F/G
	150mm	1.4/2.0mm	3	Doric/KIN LONG	Sliding door glass fan + push-pull yarn fan	Push and pull window glass fan + push and pull yarn fan	E/FG



Number of tracks	Sliding style	number
2		A
2		B
3		C
3		D
3		E
5		F
5		G
5		H



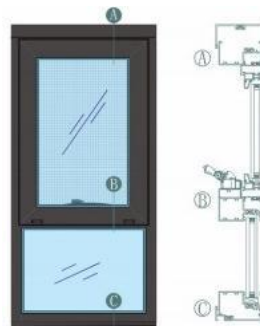
D imax 50, 60, 70, 80, 88 Heat insulation series upper hanging window



Max size: W1200\*H2850mm  
Wall thickness: 1.4mm  
Glass: Max 6+15+6  
Handle: hand window opener, multi-point lock, 7-figure handle  
Regular color: gray, low light black, brown

Features: isotherm broken bridge thermal insulation structure European standard groove structure, suitable for the market mainstream accessories hidden drainage, multi-channel sealing design  
Configurable metal gauze;

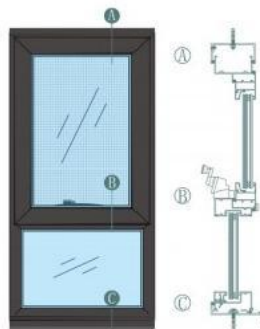
Dimax 101 Insulated series upper hanging window



Maximum specification :W1200\*H2850mm  
Wall thickness :2.0mm  
Glass :Max6+15+6  
Handle: hand window opener, multi-point lock, 7-word handle conventional  
color: gray, low light black, brown

Features: The Australian commercial and civil mainstream structural design isotherm broken bridge thermal insulation structure hidden drainage, multi-channel seal design can be configured with metal yarn mesh, suitable for a variety of installation and fixing technology.

Dimax 85 single aluminum series upper hanging window



Max size :W1200\*H2850mm  
Wall thickness :2.0mm  
Glass :Max6+15+6  
Handle: hand window opener, multi-point lock, 7-word handle conventional  
color: gray, low light black, brown.

Features: The use of Australia's commercial and civil mainstream structural design to upgrade drainage design, calmly withstand wind and rain hook-type window sash installation technology, outdoor flat, safe and beautiful configurable metal gauze; Adaptable to a variety of mounting and fixing technologies.



Product: Door with window  
Series: 70, 85, 101 series.  
Application: living balcony, small space wall.  
Regular color: gray, low light black, brown.  
Features: Can be done inside opening or outside opening flat door. Double open door large cavity fan enterprises adapt to major brand machines.  
Mechanical door lock: Electronic lock can be installed with concealed door closers, open-mounted closed A doorstep.

system	series	wall thickness	casement window	vertical hinged door	fixed window	Hanging window/ gauze mesh	window pattern
Bridge breaking system	70mm	1.4/2.0mm	Yes	Yes	Yes/Front glass	Yes/Yes	Full window type
	80mm	1.4mm	Yes	No	Yes/Front glass	Yes/Yes	Full window type
	88mm	1.4mm	Yes	No	Yes/Front glass	Yes/Yes	Full window type
	101mm	2.0mm	Yes	Yes	Yes/Front glass	Yes/Yes	Full window type
Non-broken bridge system	85mm	2.0mm	Yes	Yes	Yes/Front glass	Yes/Yes	Full window type
	100mm	2.0mm	Yes	No	Yes/Front glass	Yes/Yes	Full window type
	126mm	2.0mm	Yes	No	Yes/Front glass	Yes/Yes	Full window type
	150mm	2.0mm	Yes	Yes	Yes/Front glass	Yes/Yes	Full window type



BRILLIANCE System doors and Windows adopt the overall door and window system solution, and make a clear commitment to the performance and quality indicators of the product. Consider water tightness, air tightness, wind pressure resistance, mechanical strength, heat insulation, sound insulation, anti-theft, sunshade, weather resistance, operator Sense and a host of other important functions. Also consider the equipment, profiles, accessories, glass, viscose, seals performance of all aspects of the comprehensive results. According to the requirements of the overall solution, design, manufacture, installation, and achieve the promised performance and quality indicators in actual use of the product.



## Product features and advantages

### Unique Dimax system door and window design

Unique Dimax system door and window design: multi-functional profile design can be applied to a variety of different window types, can be used in a variety of cold and hot weather environment, coupled with the unique system door and window ventilation system, so that the door and window as a whole to meet the requirements of building energy saving 75%, in the greatest extent to ensure the performance of doors and Windows, to meet the needs of people.

### Unique Dimax system door and window design

Details determine success or failure, the team is greater than the individual. Dimax adheres to the spirit of sincere cooperation, mutual dedication and teamwork. For many challenging high-end residential villa projects to provide professional high-quality products, to win the recognition of customers.

### Very easy to install and disassemble

When a certain part of the decoration such as external doors and Windows is damaged, whether it can be flexibly and conveniently disassembled and replaced is directly related to whether the function of external maintenance can be maintained, whether the structure can be affected and other factors, so our company requires that the structural design of doors and Windows must be replaced, and it is very convenient to disassemble and assemble, and can not affect the normal use of the external maintenance system

### Australian standard

When a certain part of the decoration such as external doors and Windows is damaged, whether it can be flexibly and conveniently disassembled and replaced is directly related to whether the function of external maintenance can be maintained, whether the structure can be affected and other factors, so our company requires that the structural design of doors and Windows must be replaced, and it is very convenient to disassemble and assemble, and can not affect the normal use of the external maintenance system



### Dimax system features of doors and Windows

- 1- Whole window:** Dimax system doors and Windows use mortise and tenon structure + tip stainless steel flat steel sheet Angle technology to make doors and Windows sealed, The fastness is more stable. The selection of PVB laminated glass, insulating glass, thermal insulation, sound insulation and noise reduction performance has been effectively improved. scientific Drip line structure + mature drainage design of European and American countries, prevent water infiltration or timely drainage from the details, so that the water tightness of doors and Windows can be better improved. Multi-channel sealing structure, quiet while improving the tightness of doors and Windows. Optional 304 stainless steel gauze, nano dust-free gauze, safety protection, easy to disassemble. Standard with 2.0mm wall thickness profile, strength witness wind resistance, resist wind, safety and security. Unit structure, easy installation, easy disassembly and easy maintenance, disassembly and installation does not damage the wall.
- 2-profile:** All Dimax doors and Windows are made of high-precision 6063-T5 or T6 aluminum alloy building profiles, and the surface treatment of profiles is made of fluorocarbon spray or powder spray, with the best weather resistance of up to 20 years. The rich color library can meet different personalized color customization Needs.
- 3-Glass:** Dimax system doors and Windows are deep-processed online or offline Low-E (low-radiation coated glass) using well-known brand original pieces. Float glass, sound insulation, heat insulation performance is excellent.
- 4- Sealant:** The use of well-known brands of silicone structural sealant or building sealant, building sealant does not add mineral oil and harmful



## Company Philosophy



**Pricing:** Continue to provide customers with competitive price quality products to meet customer needs, continue to create value for customers.

**Quality:** With the craftsman's heart to manufacture meticulous and perfect products, to provide customers with the most cost-effective overall solution.

**Profit:** Seek reasonable profits, not lower than the average level of the industry, to meet the basic needs of enterprise development, do not pursue short-term high profits.

**Innovation:** The source of enterprise development, will continue to invest and encourage all staff innovation, laying a solid foundation for the long-term development of enterprises.

**lasting:** Maintain the continuous development of the enterprise, formulate medium - and long-term (5-10 years) development planning, focus on the target market, clear development objectives, and make a lasting happy enterprise.

**Win-win:** Be a responsible enterprise that benefits customers, employees, enterprises and society at the same time.



## Enterprise Culture

### Mission of company

To "build a perfect home life, create workers want to develop the platform" to make life.



### Corporate vision

Become the world's respected, home door window business.



### Company policy

Follow the "Science management, quality first, quality service, reputation first" The square needle.



## Letters Patent

A number of superior products obtained patent review.



## Team Spirit



Integrity Quality Efficient Dedicate Innovate

**Dedication:** Dedication to customers, dedication to employees, dedication to enterprises, dedication to society.

**Innovation:** In order to achieve a perfect home life, continuous innovation is indispensable.

We are a professional team. Our members have many years of Windows and doors professional technical background, is a young team, full of vitality and innovative spirit.

We are a focused team. We firmly believe that a good brand comes from the trust of our customers. Only focus, can do a good product.

We are a team with a dream. We come from all over the world, because of a common dream: To become a respected enterprise in the global home door and window industry, providing customers with the most cost-effective overall solution for doors and Windows.

## Australian standard certificate

The products have been tested by the Australian official designated testing agency, and the indicators meet the Australian standard testing standards



## Cooperative Partner

