

COMPANY PROFILE

STRIVE TO BE YOUR TRUSTWORTHY PARTNER

www.hhalum.com
www.aagaluminum.com

CONTENTS

- 1** About Us
- 2** Enterprise Honor Certification
- 3** Our Markets
- 4** Our Factory
- 5** Product Display
- 6** Our Advantages
- 7** Sales Procedure
- 8** Our Customer

01 ABOUT US

BRILLIANCE METAL CO.,LTD, a comprehensive enterprise with wide business scopes covering investments, metal, equipment and energy industry.

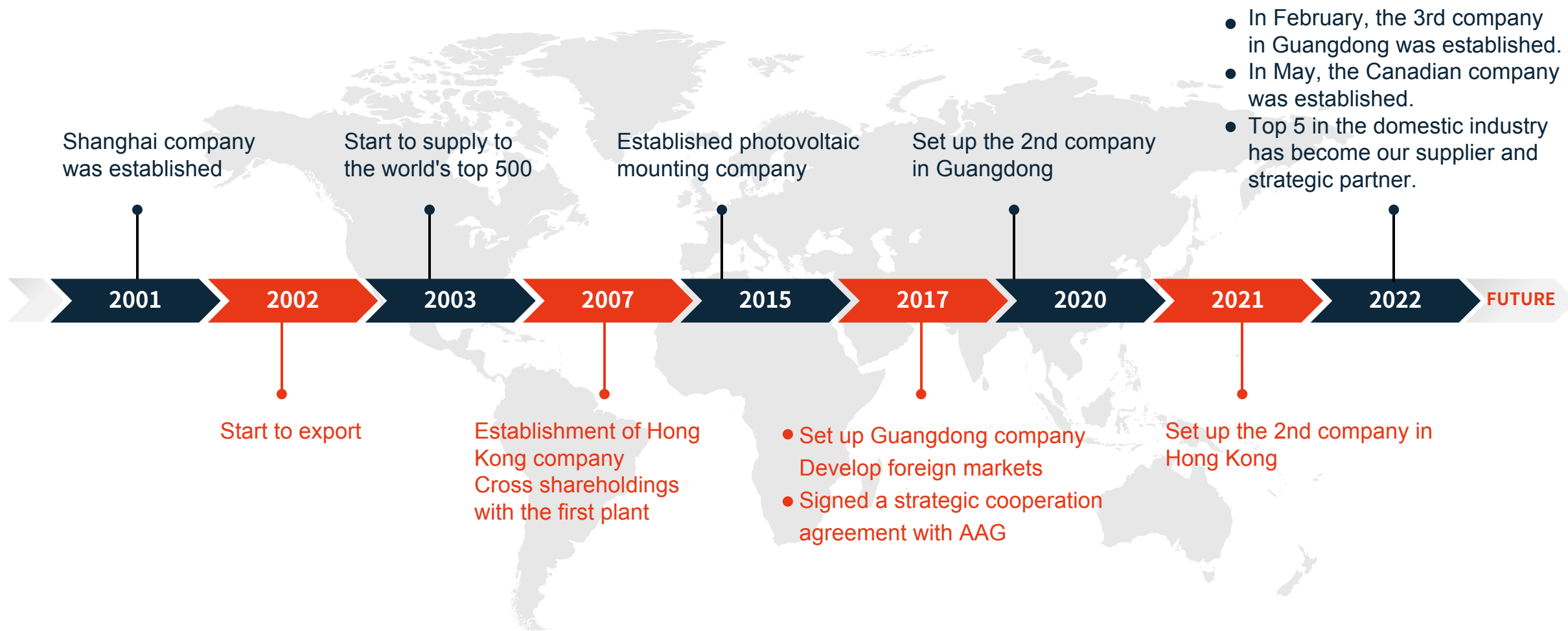
Our main products of export are

1. Metal materials such as: OEM customized aluminum construction profiles, industrial profiles and decoration profiles, etc.
2. Semi-finished products such as CNC parts and other machining parts, etc.
3. Finished products such as doors and windows, fences, gutter guards, grass edging, ladders, etc.

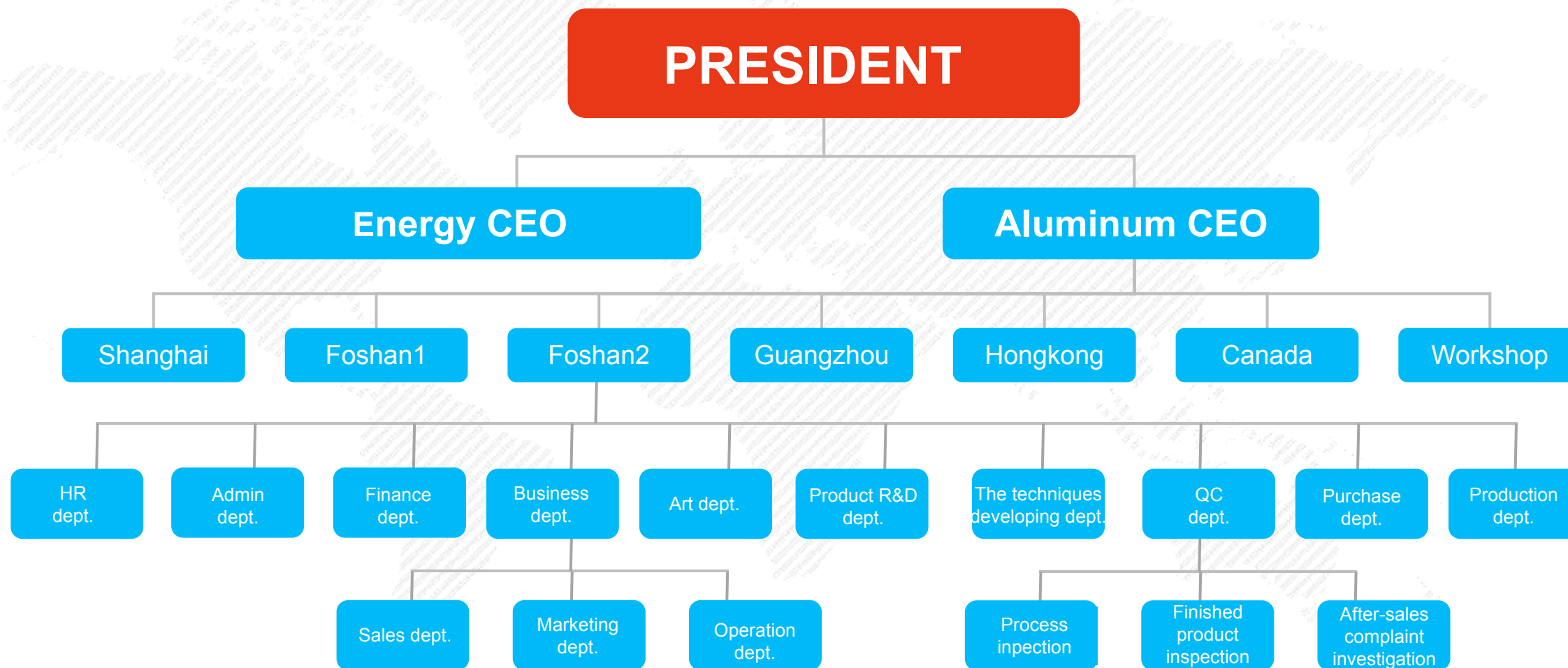
Brilliance has our own invested factories and 7 service companies. They are in Shanghai, Foshan, Guangzhou, Nanping, Wuxi, Hongkong, Vancouver, etc.



DEVELOPMENT PATH



CORPORATE STRUCTURE



02 ENTERPRISE HONOR



CERTIFICATION

ENTERPRISE HONOR

BRILLIANCE
CHINESE ALUMINIUM EXPERT SINCE 2001



03 OUR MARKETS

OUR MARKETS

Exporting to 100+ countries

North America: USA ,Canada...

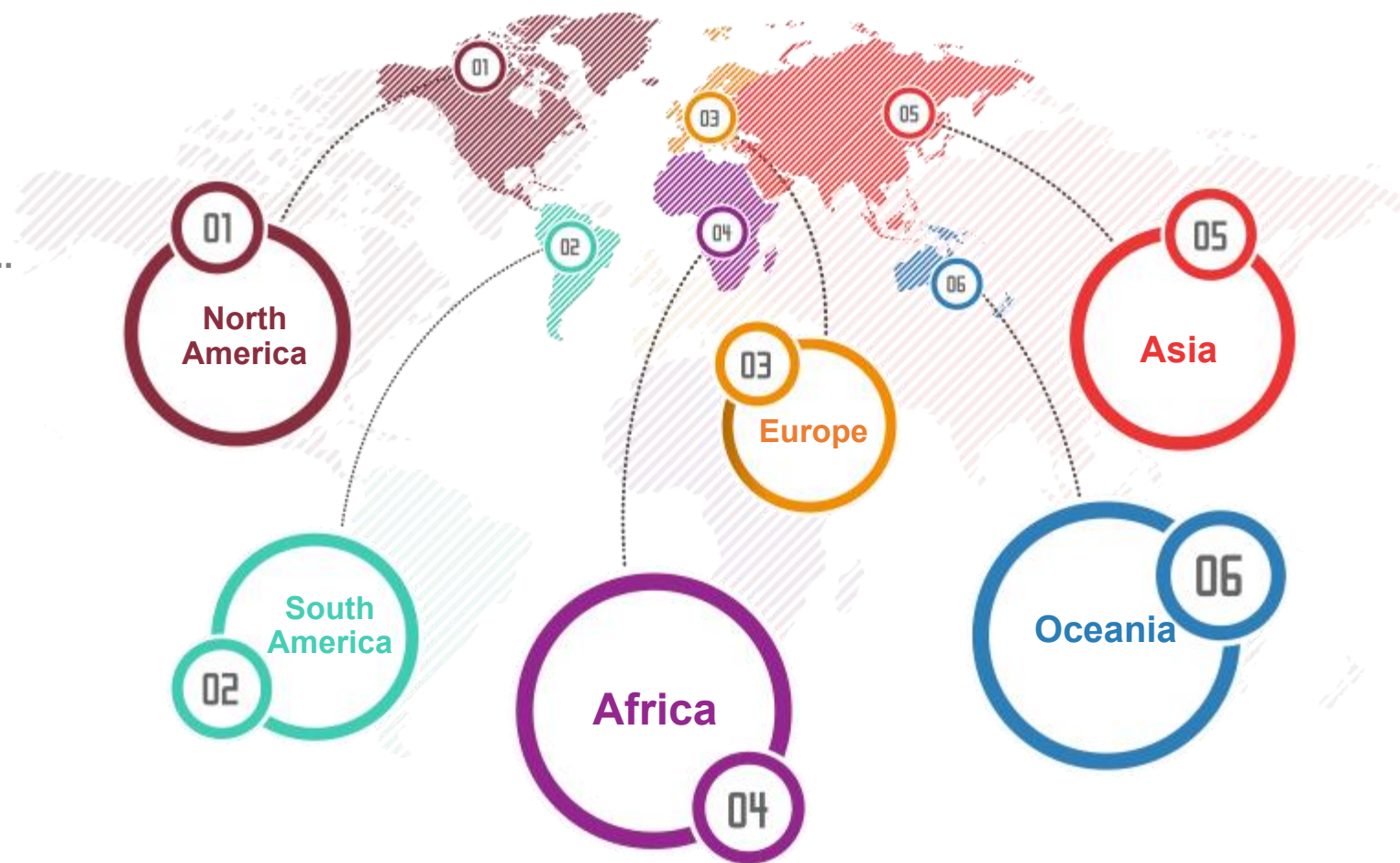
South America: Brazil, Argentina, Colombia, Chile...

Europe: UK, Germany, France, Russian, Ukarine, Poland, Sweden, Spain, Portugal, Italy, Slovenia, Cyprus, Italy, Spain...

Oceania: Australia, New Zealand...

Asia: South Korea, Thailand, Singapore, Indonesia, Malaysia, India, Pakistan, Israel, United Arab Emirates, Saudi Arabia, Lebanon...

Africa: South Africa, Ghana, Zambia...



04 OUR FACTORY

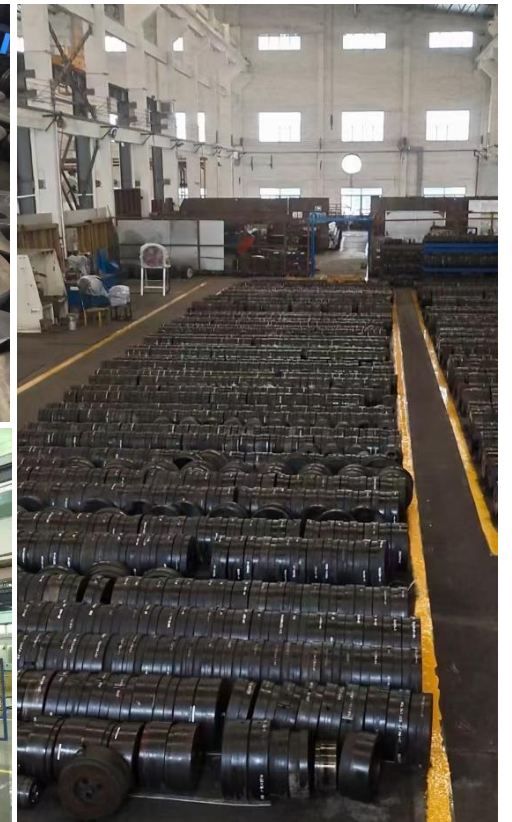
OUR FACTORY

CASTING FURNACE



1 Aluminium ingot & chemical elements furnace aluminium billet

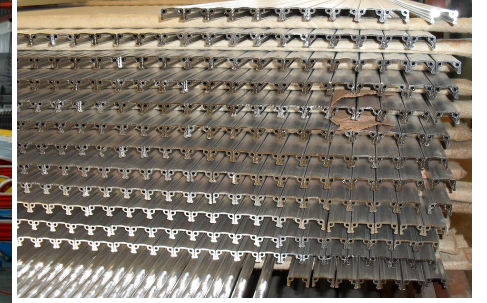
2 Aluminium alloy 6060, 6063, 6061, 6005, 6082...



1

Industrial aluminum profile processing test mold

EXTRUSION EQUIPMENT

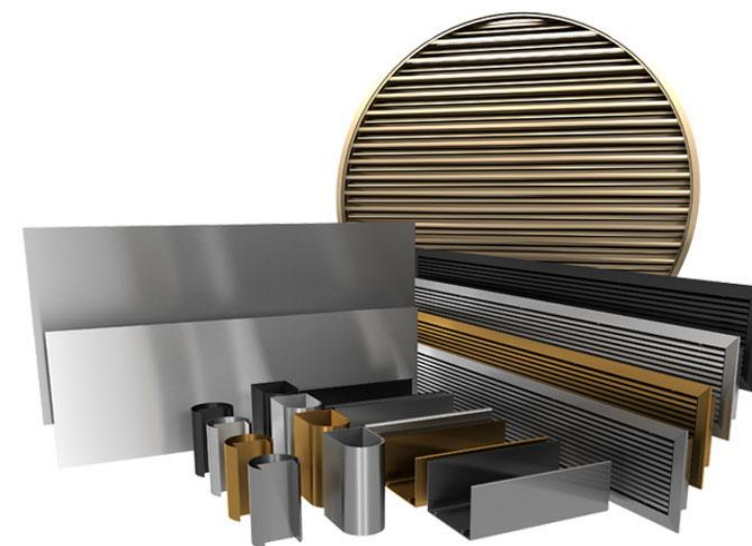
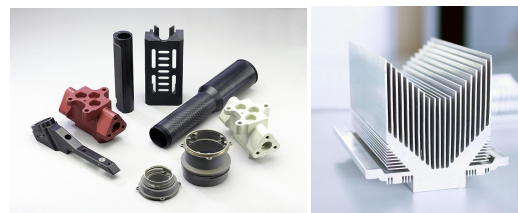
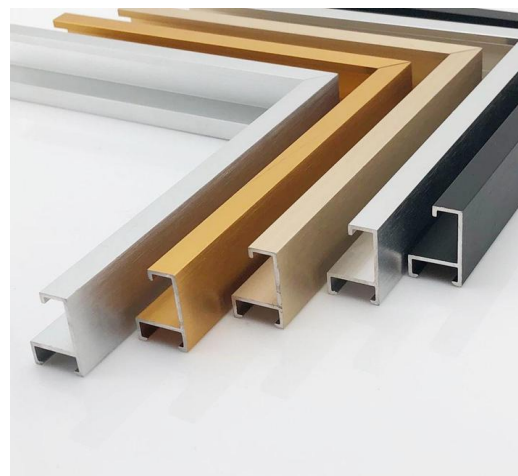


- 1** 56 extrusion lines.
- 2** Extrusion presses are up to 20000 tons.
- 3** Sizes up to 650mm width.
- 4** Monthly output 3000T.



- 1 High precision and control: improve its quality and performance.
- 2 High temperature treatment: above 600° C.
- 3 Highly automated
- 4 Environmental protection: dust-free and smoke-free production process can be realized.

ANODIZING



1

Three anodizing lines, monthly output 20000T.

2

Standard: DIN, AAMA, AS, CHINA GB.

3

Color choices: silver, bronze, champagne, titanium, nickel, golden yellow...

4

Micro up to 25um.

OUR FACTORY

POWDER COATING



- 1** Two powder coating lines, monthly output 2000T.
- 2** Swiss machine GEMA.
- 3** Standards: DIN, AAMA, AS, CHINA GB.
- 4** Micro is more than 60um. AKZO NOBEL INTERPON, NIPPON, TIGER, PPG, etc. Weather Resistance: more than 6 years.

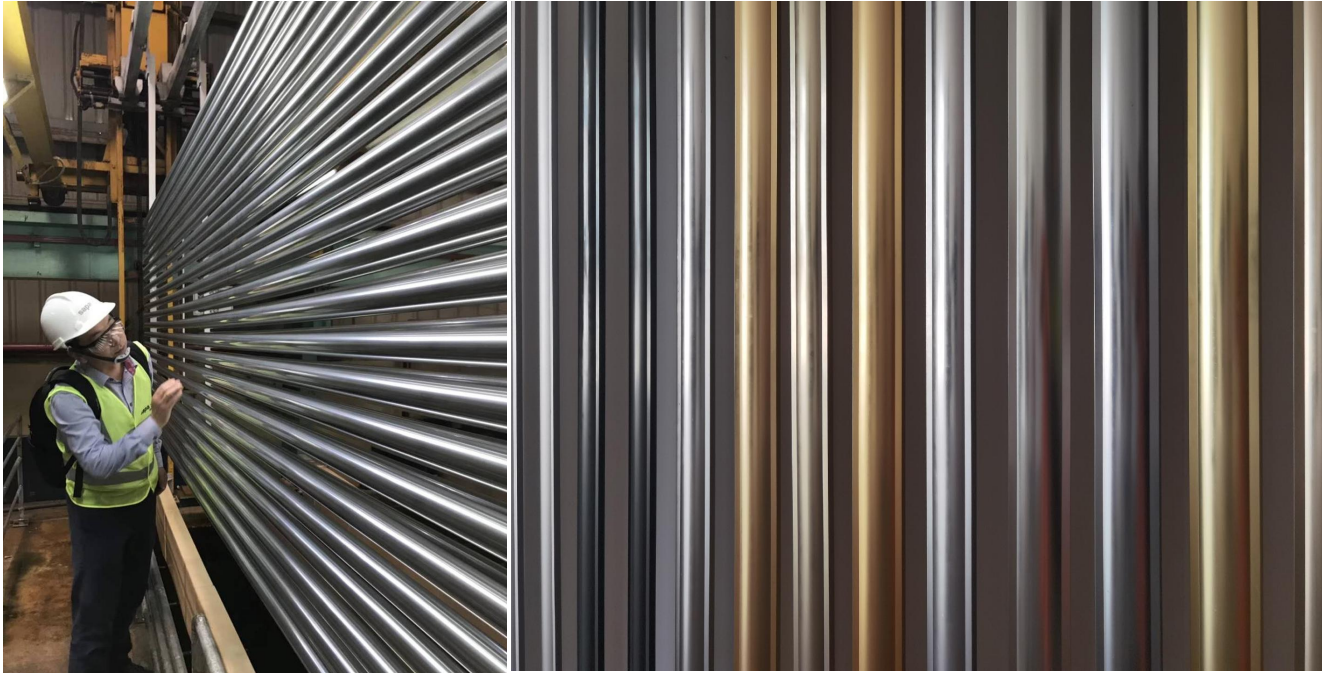
OUR FACTORY

WOOD GRAIN



- 1** Monthly output 3000T.
- 2** AKZO NOBEL INTERPON D34 & D1010.
- 3** Transfer paper from Memphis, Sublitex, Renolit, and top Chinese brands, etc .
- 4** Weather Resistance: 5 - 10 years guarantee.

POLISHING & BRUSHING



1 POLISHING

- 1.Monthly output 5000T.
- 2.Three-acid chemical polishing and mechanical polishing.
- 3.Color choices: silver, nickel, golden yellow...

2 BRUSHING

- 1.Monthly output 5000T.
- 2.Brushing with nylon brush and then anodizing, or chemical polishing.
- 3.Effect: filamentous strips on the surface.
- 4.Color choices: silver, nickel, bronze, golden yellow...



MACHINING PROCESSING



- 1** Machining: punch, drill, mill, CNC, weld, etc
- 2** Cutting tolerance $\pm 0.3\text{MM}$.
- 3** Machining tolerance $\pm 0.005\text{MM}$.



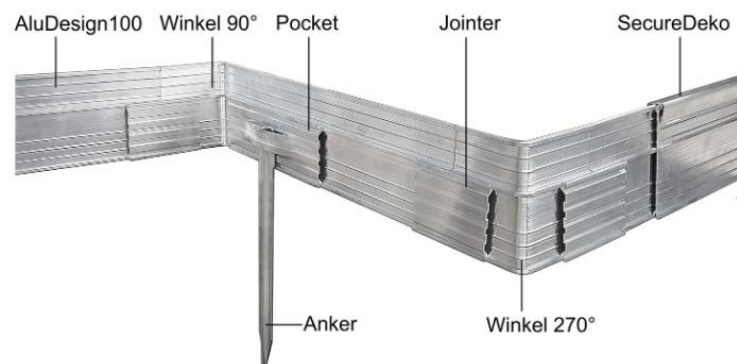
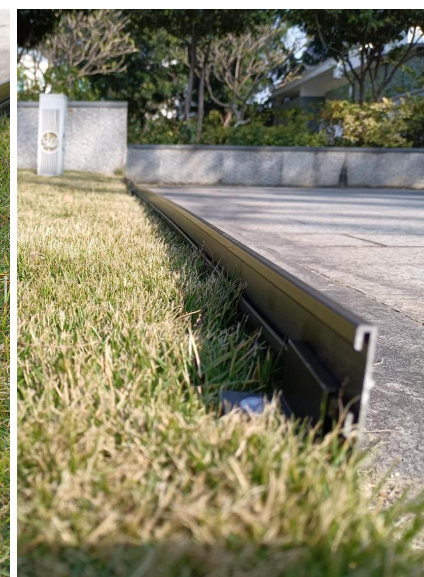
- 1** Strict QC System: Each order will be inspected through 3+ times quality inspection. Raw material QC, production process QC, FQC, or more.
- 2** Quality standard: ISO9001, AQL MIL-STD-105E, drawing standard, sample standard, GB, Enterprise standard.



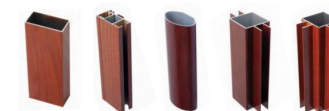
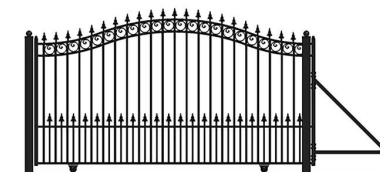
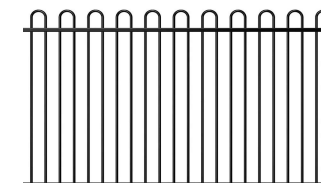
- * Plastic film & kraft paper packing
- * Plastic bag packing & Carton packing
- * Plywood board packing
- * Wood box packing
- * Pallet packing
- * Stillage packing
- * Bundle packing
- * By customers' requirements.

05 PRODUCT DISPLAY

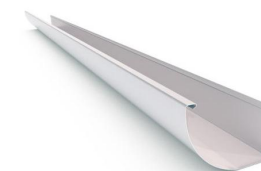
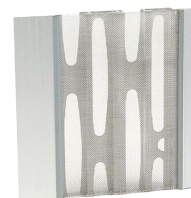
ARCHITECTURE LAWN FENCE



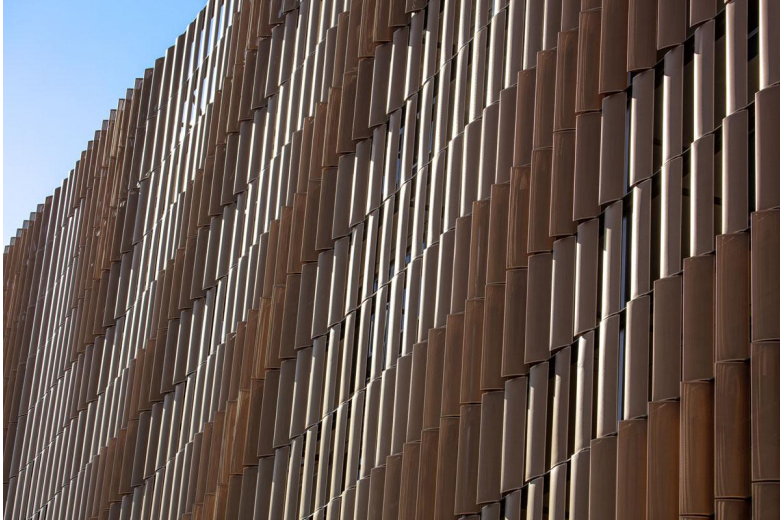
ARCHITECTURE FENCE PANEL



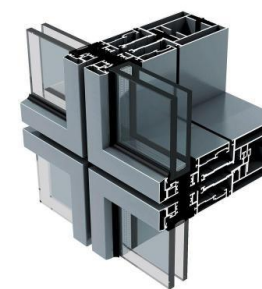
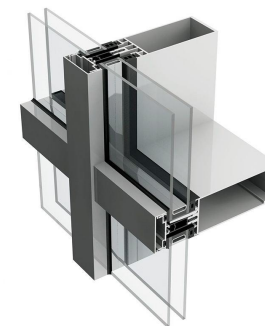
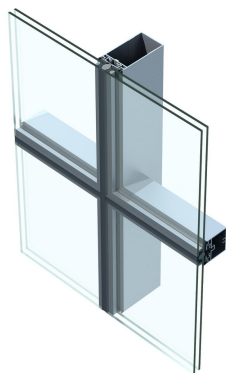
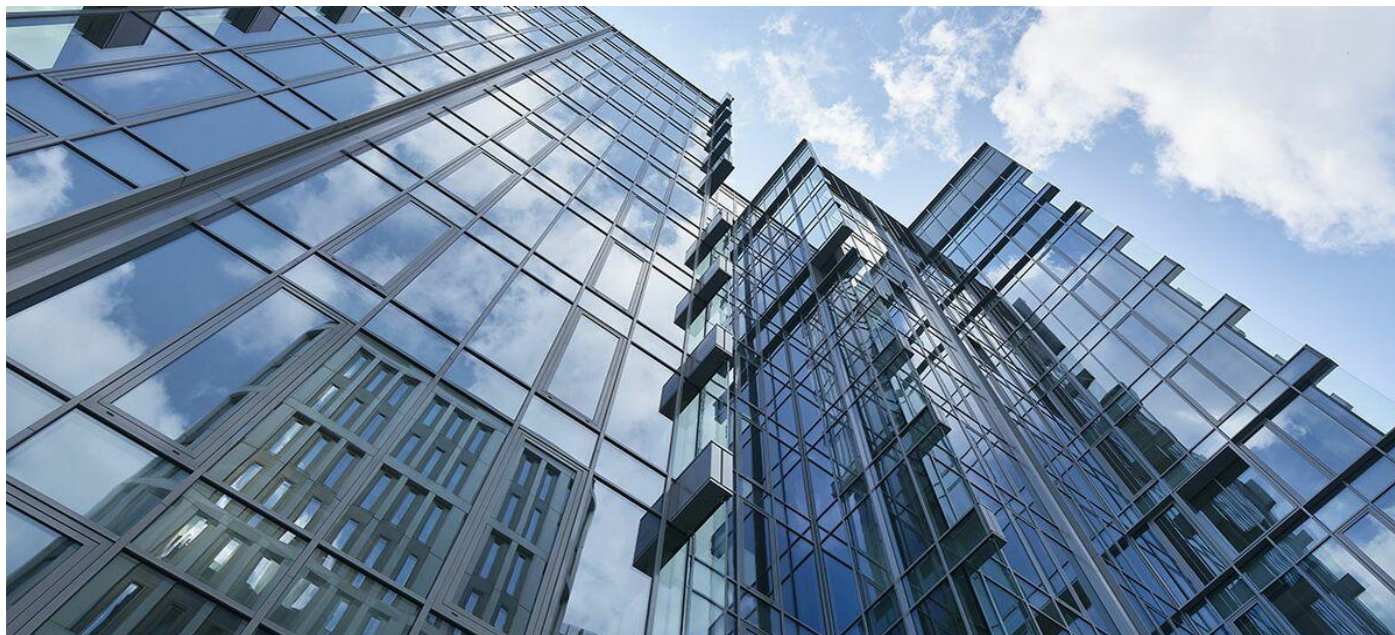
ARCHITECTURE GUTTER GUARDS



ARCHITECTURE SHADE LOUVER



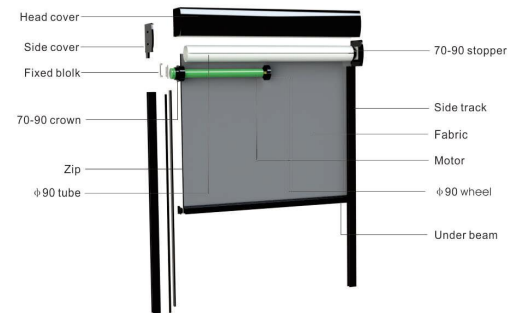
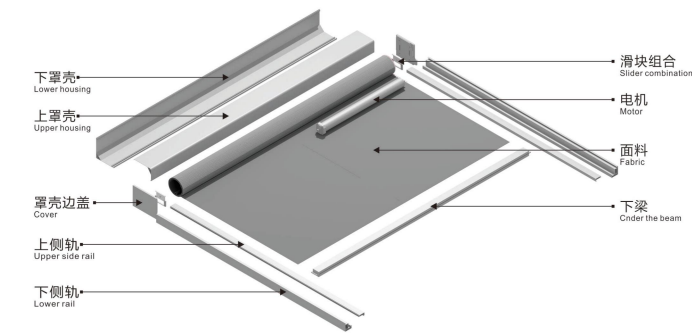
ARCHITECTURE GLASS CURTAIN WALL



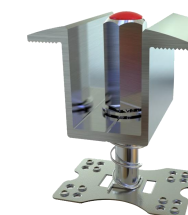
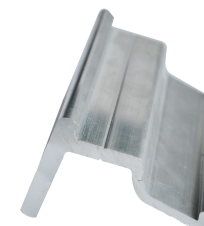
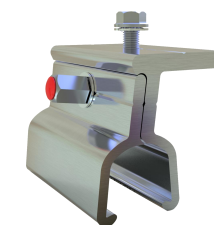
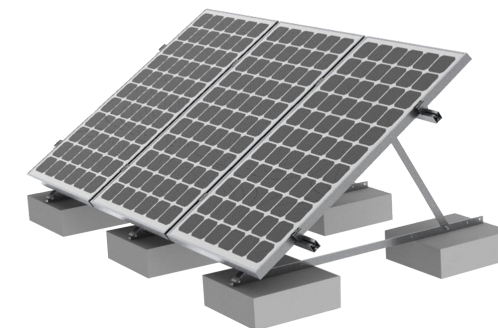
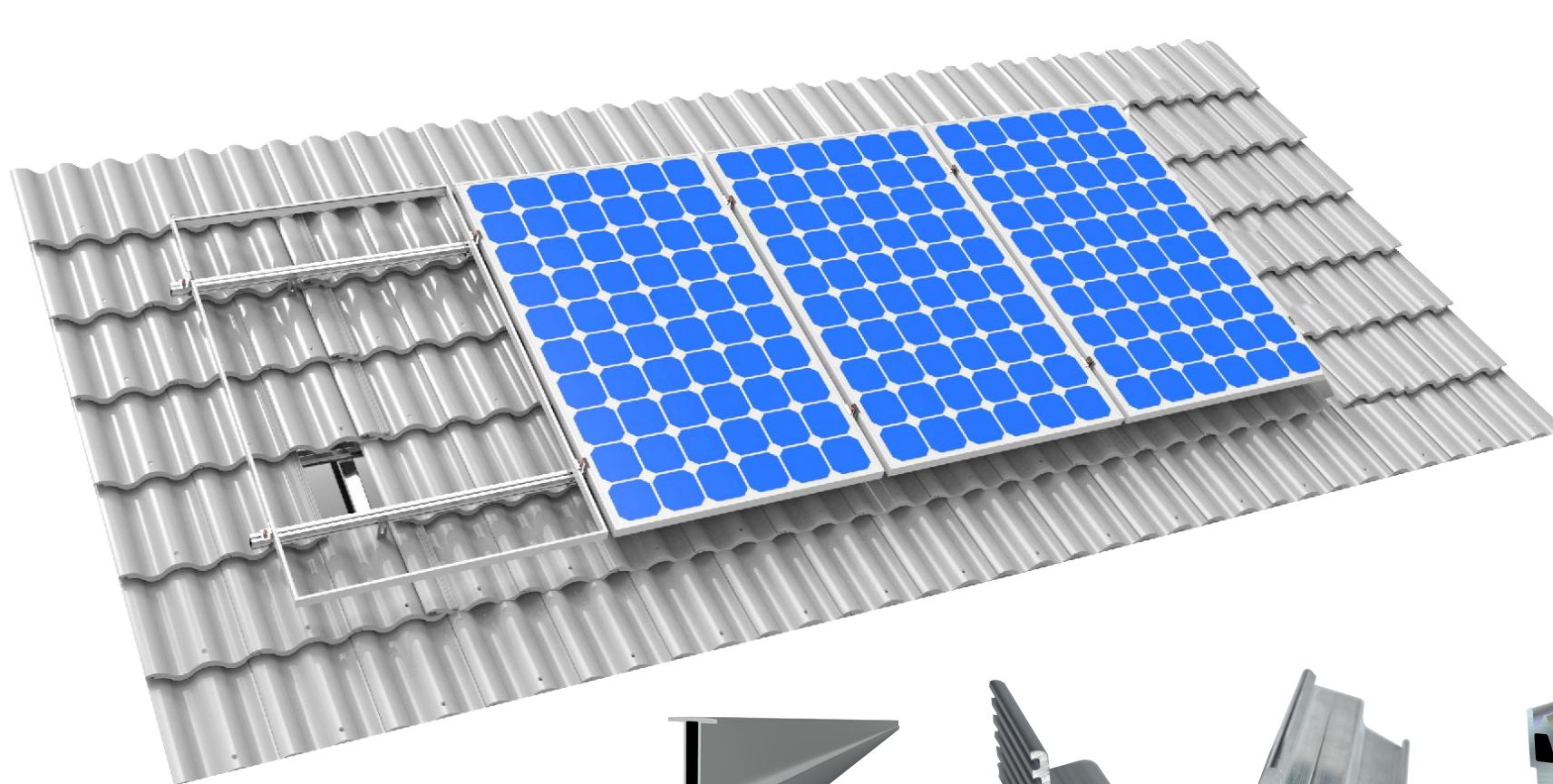
ARCHITECTURE ALUMINIUM DOORS AND WINDOWS



ARCHITECTURE CURTAIN DOOR



INDUSTRIAL ALUMINUM PROFILE FOR SOLAR PANEL



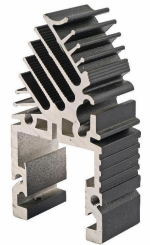
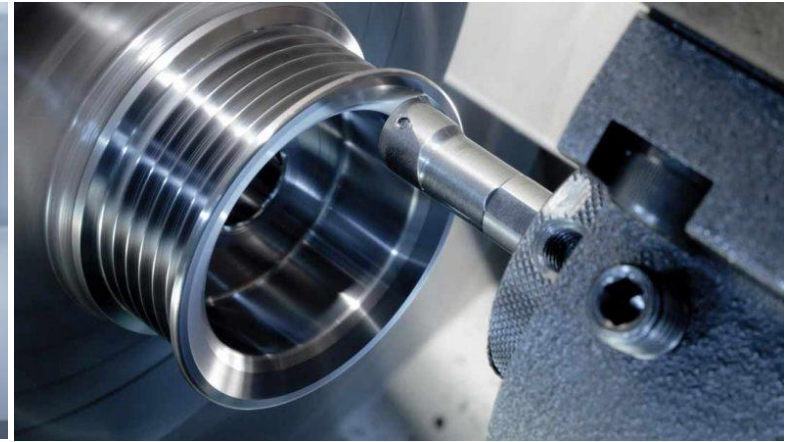
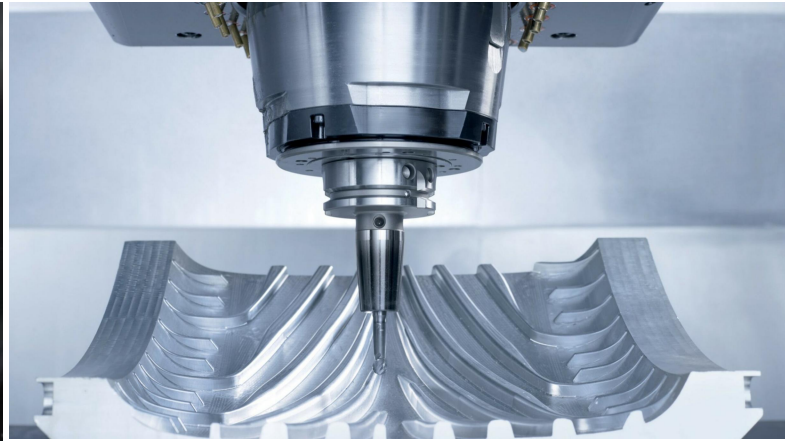
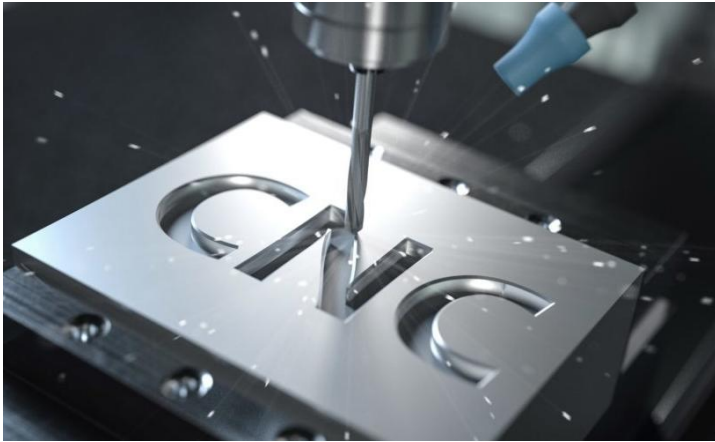
INDUSTRIAL ALUMINUM PROFILE FOR PRODUCTION LINE



INDUSTRIAL HEATSINK



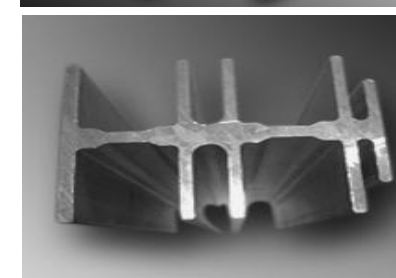
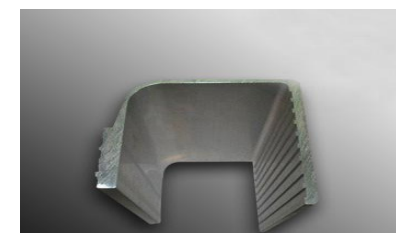
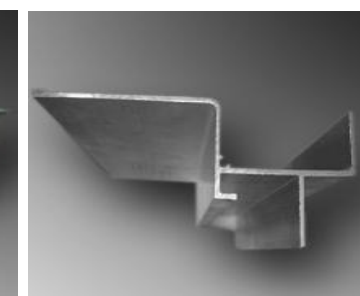
INDUSTRIAL CNC MACHINE TOOL PROCESSING PARTS



INDUSTRIAL

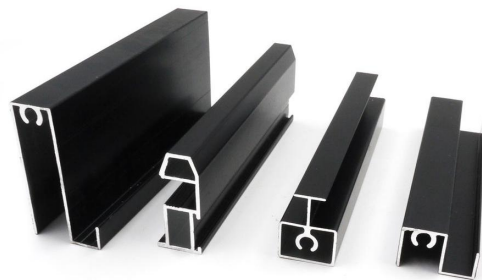
ALUMINUM PROFILE FOR TRANSPORTATION TOOL

BRILLIANCE
CHINESE ALUMINUM EXPERT SINCE 2001

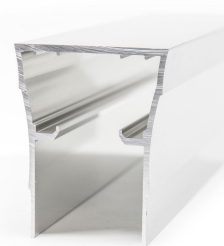
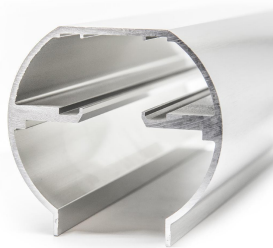


DECORATION

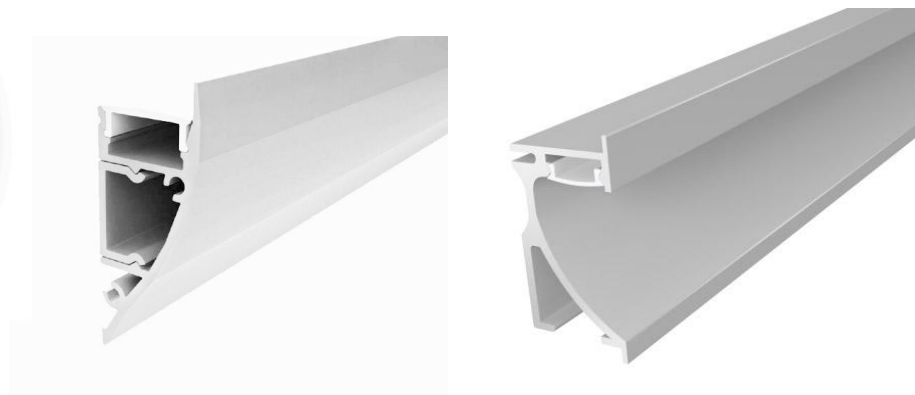
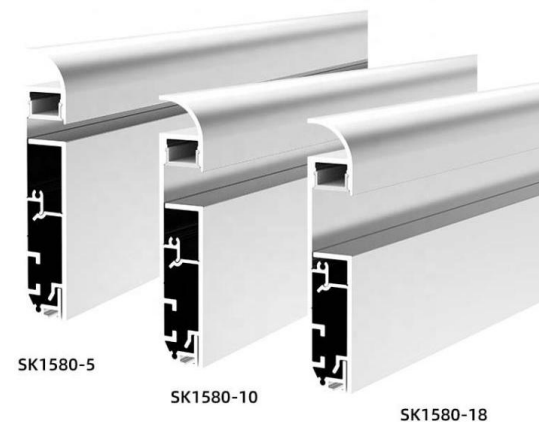
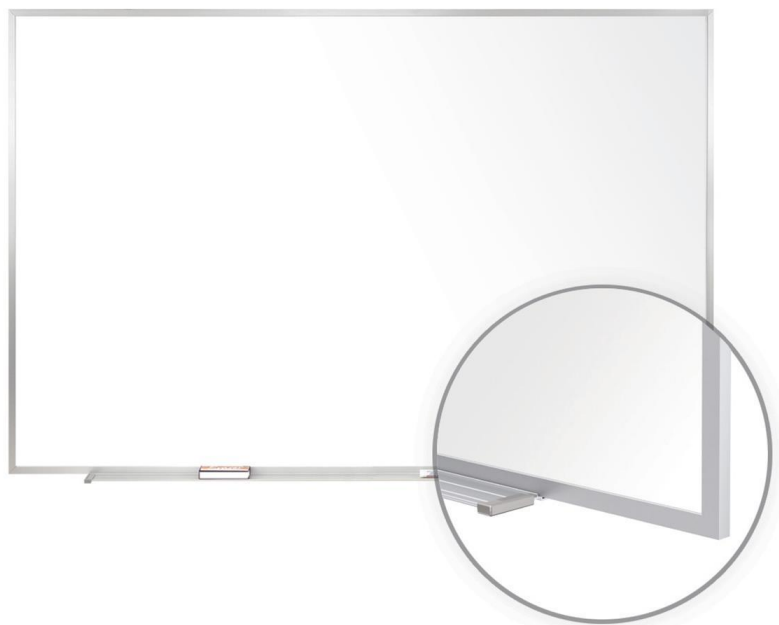
ALUMINUM PROFILE FOR FURNITURE PROFILES



DECORATION ALUMINUM PROFILE FOR SHOWER ENCLOSURE



DECORATION ALUMINUM PROFILE FOR **WHITE BOARD**



AS PER YOUR REQUEST
MORE APPLICATION



06 OUR ADVANTAGES



OUR ADVANTAGES

On-site visit for better services



24H

Prompt feedback



22Y

22 years of
manufacturing
aluminium products
experience



QC

Strict QC system



R&D

Professional team
of technological
research and
development.



CUSTOMIZE

OEM customized
designing to
realize your ideas
and concepts.



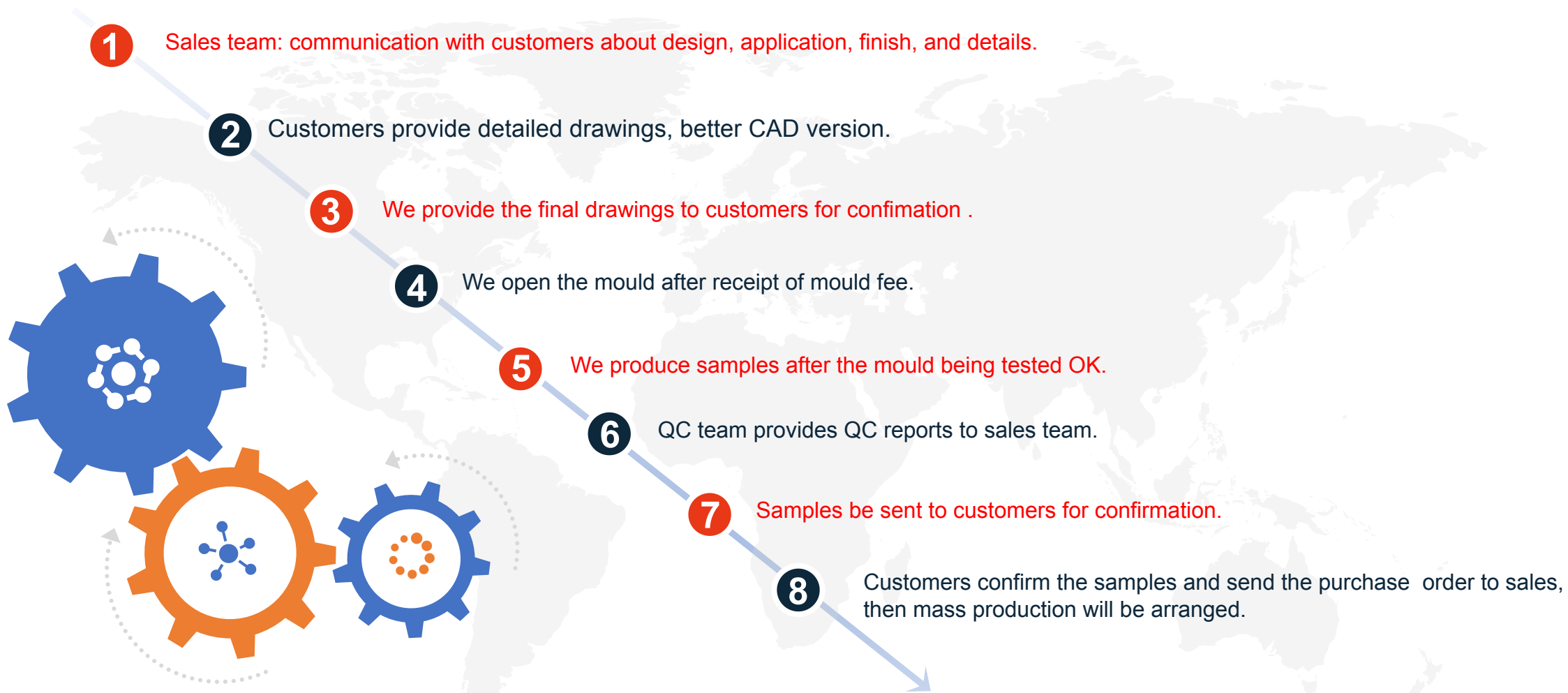
TECHNOLOGY

Strong technical
support for one
stop purchase.

07 SALES PROCEDURE

PROFESSION AND CONCENTRATION WE CHOOSE BOTH

SALES PROCEDURE



08 OUR CUSTOMER

CUSTOMER SATISFACTION IS OUR PRIORITY

CUSTOMER SATISFACTION IS OUR PRIORITY



THANKS
F O R Y O U T I M E